

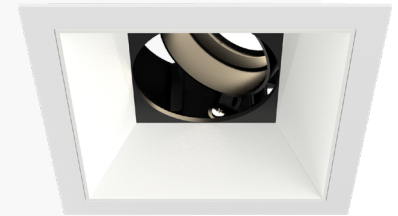
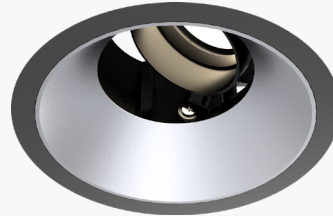
SENSE 3.0

Adjustable Downlight

VEROZZA
A NEKO LIGHTING GLOBAL PARTNER

SENSE ADJUSTABLE DOWNLIGHTS

provide ultimate design flexibility from its modular, scalable design. Fixture sizes range from 1" to 5" and are all available in a variety of reflector finishes in both round and square shapes, able to match any décor. Precision TIR optics combined with set screw aiming deliver light where you need it.



FEATURES

- Flangeless fixture installation provides a clean, sleek and modern appearance
- Reflectors are easily changeable in the field
- Use the wet location rated trim for indoor shower or outdoor soffit applications

GOOD TO KNOW

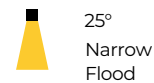
- The Sense Family of fixtures offers sizes and features that provide solutions for the complete lighting project
- A Single LED Module works with all available trims, housings and reflectors
- Set screws offer precise adjustment of vertical aiming angle up to 30° either before or after fixture installation



SPECIFICATIONS

OPTICAL

- Beam Angle



25°
Narrow
Flood



35°
Flood



45°
Wide
Flood

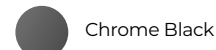


Wall
Wash

- Reflector Finish



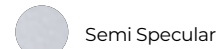
Matte Black



Chrome Black



Specular



Semi Specular



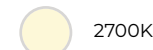
Gold



Matte White

- Color Temperature

90 CRI standard, 80 CRI available, 3 SDCM



2700K



3000K



3500K



4000K



Warm Dim 1800-3000K

MECHANICAL

- Three-piece fixture construction; LED Module, Trim, and Housing
- Self-flanged, flangeless drywall and flangeless millwork trim rings
- Die cast aluminum trims
- Self-flanged trims install with swing out arms and set screws
- Flangeless trims install with mud ring and drywall screws
- Install in ceilings between ¼" and 1" thick

- Fixture rotates up to 355° and tilt up to 30°
- Spring loaded module uses set screws to preset fixture tilt prior to installation

HOUSING

- New construction steel frame supplied with universal bar hangers and butterfly brackets
- Bar hangers are adjustable from 13-1/4" to 24-1/2"
- Fixture and driver are serviceable from below the ceiling

ELECTRICAL

- Universal 120-277V, 50/60Hz, 0-10V or 120V, 60Hz Triac/ELV dimming driver available
- Drivers connect to LED modules using plenum rated, quick connect cable

THERMAL

- Die cast aluminum heat sink
- Ambient fixture operating range: -20°C to 40°C (-4°F to 104°F)

COMPLIANCE

- ETL listed for Damp locations
- Optional Wet location rated trim

WARRANTY

- 5 Year limited parts warranty



SENSE 3.0

Adjustable Downlight



PRODUCT CODE

Build Your Specification: A complete luminaire includes Product Codes for a Fixture, Trim and Housing, ordered separately

Fixture

SEN								
SERIES	SIZE/SHAPE	APPLICATION	NOMINAL LUMEN OUTPUT	BEAM ANGLE	CRI/CCT	REFLECTOR FINISH	OPTIONS	
SEN SENSE	3R 3" Round	A Adjustable	9L 950 lumens	NF Narrow Flood (25°)	827 80 / 2700K	BL Matte Black	WET ³ Wet location rated trim	
								830 80 / 3000K
	3S 3" Square	F Fixed	16L 1650 lumens	FL Flood (35°)	835 80 / 3500K	GD Gold	CL ³ Clear Lens	
								840 80 / 4000K
		WW Wall Wash			WF Wide Flood (45°)	927 90 / 2700K	SS Semi Specular	FR ³ Frosted Lens
					WW Wall Wash	935 90 / 3500K	WW Wall Wash	HC ² Field Installed Honeycomb Louver
						WD Warm Dim 90 / 1800 - 3000K		

Trim

SEN			
SERIES	SIZE	TYPE	FINISH COLOR
SEN SENSE	3R 3" Round	SF Self Flanged	BL Matte Black
			WH Matte White
	3S 3" Square	NF Flangless drywall	CF ¹ Custom Finish

Housing

SEN						
SERIES	SIZE / SHAPE	FLANGE TYPE	NOMINAL LUMEN OUTPUT	TYPE	VOLTAGE / DRIVER	OPTIONS
SEN SENSE	3R 3" Round	SF Self-Flanged	9L 950 lumens	NC New Construction Non-IC	PD120V 120V only, Phase dimming Triac & ELV	EM Emergency battery backup, consult factory for installation options
	3S 3" Square	NF Flangless Drywall	16L 1650 lumens	REM Remote, consult factory	010UNV Universal 120-277V, 0-10V dimming	

¹ Specify RAL # from K5 classic collection ² Not available with Fixed, WW, Wet location or Lens options ³ Only available with the ADJUSTABLE application ⁴ Only available for 9L models

SENSE 3.0

Adjustable Downlight

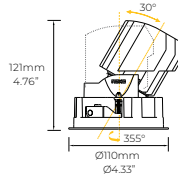
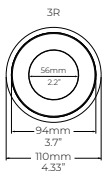
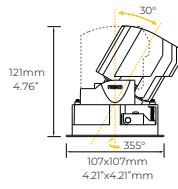
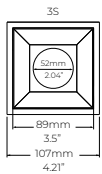


DIMENSIONS

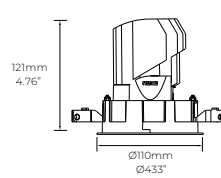
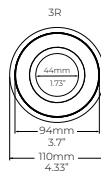
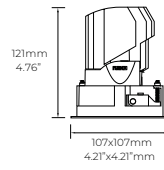
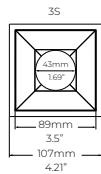
Fixture

Self-Flanged

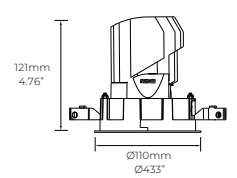
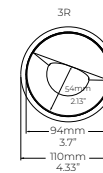
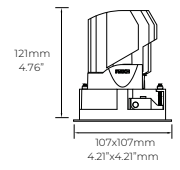
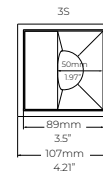
ADJUSTABLE



FIXED

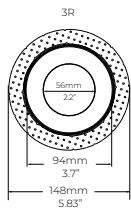
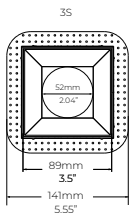


WALL WASH

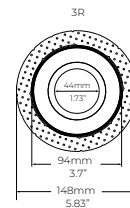
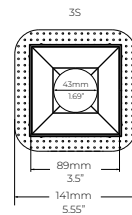


Flangeless Drywall

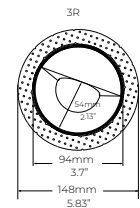
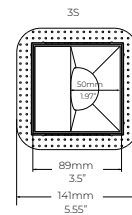
ADJUSTABLE



FIXED



WALL WASH



SENSE 3.0

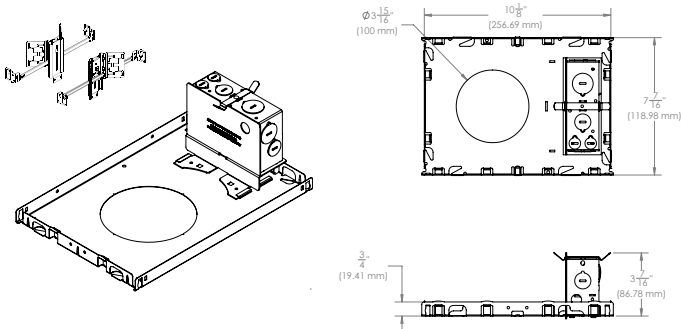
Adjustable Downlight



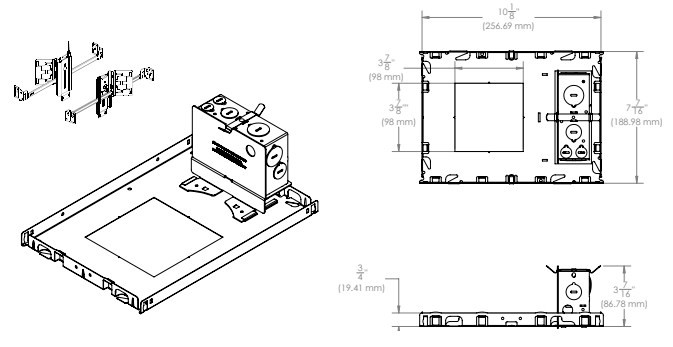
DIMENSIONS

Housing

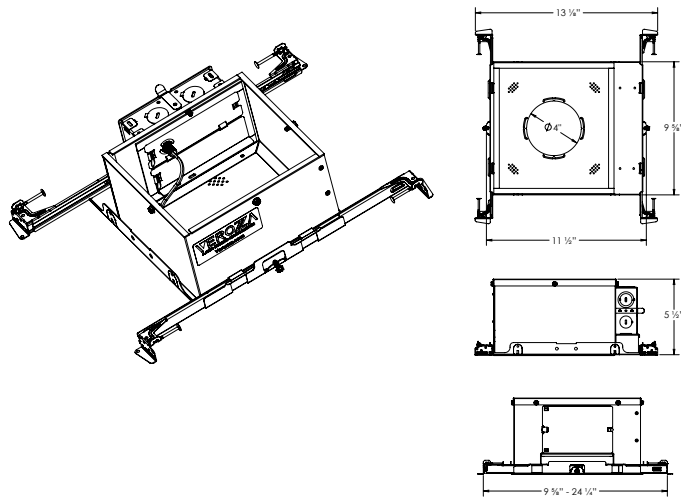
Non-IC New Construction | Round



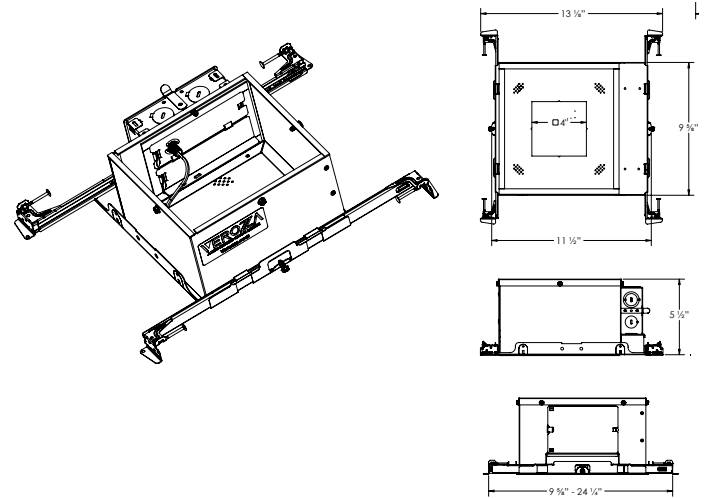
Non-IC New Construction | Square



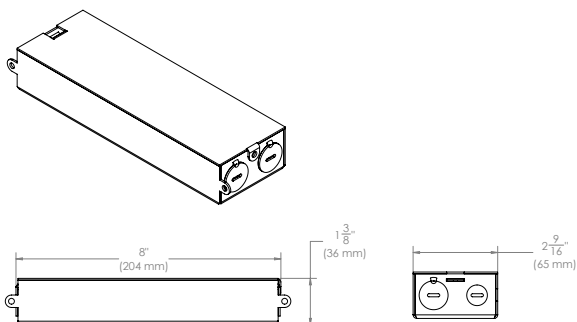
IC/AT Insulated Ceiling Airtight New Construction | Round



IC/AT Insulated Ceiling Airtight New Construction | Square



Remodel Driver Housing



Fixture	Ceiling Cutout
Sense 3R, 3" Round, Self-Flanged	$\varnothing 3-15/16''$ (100mm)
Sense 3R, 3" Round, Flangeless	$\varnothing 4-1/4''$ (108mm)
Sense 3S, 3" Square, Self-Flanged	$3-3/4'' \times 3-3/4''$ (96mm x 96mm)
Sense 3S, 3" Square, Flangeless	$3-3/4'' \times 3-3/4''$ (104mm x 104mm)

SENSE 3.0

Adjustable Downlight

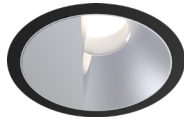
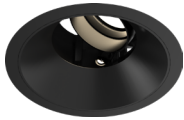
VEROZZA
A NEKO LIGHTING GLOBAL PARTNER

FIXTURE FINISH

Adjustable

Fixed

Wall Wash

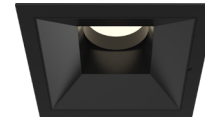
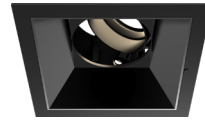


BL = Black

Adjustable

Fixed

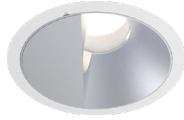
Wall Wash



Adjustable

Fixed

Wall Wash

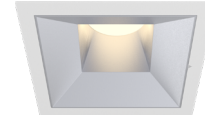
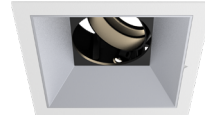


WH = White

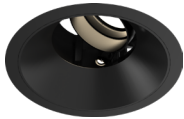
Adjustable

Fixed

Wall Wash



REFLECTOR FINISH



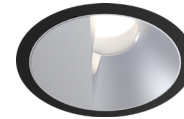
BL = Black



CB = Chrome Black



GD = Gold



WW = Wall Wash



WH = White



SS = Semi Specular



SP = Specular



CF = Custom Finish

OPTIONS



WET = Wet location rated



CL = Clear Lens



FR = Frosted Lens



HC = Field Installed Honeycomb Louver

SENSE 3.0

Adjustable Downlight



PHOTOMETRIC PERFORMANCE

Technical Information table

Fixture	Input Voltage	Input Current	Input Power	THD	Power Factor
SEN-3R-A-9L	120V / 277V	350mA	13W	<20%	>0.9
SEN-3R-A-16L	120V / 277V	500mA	21W	<20%	>0.9
SEN-3S-A-9L	120V / 277V	350mA	13W	<20%	>0.9
SEN-3S-A-16L	120V / 277V	500mA	21W	<20%	>0.9

Nominal Performance

Fixture	Beam Angle	90CRI, 3000K	
		Lumens	LPW
SEN-3R-A-16L	NF = Narrow Flood (25°)	1537	75
	FL = Flood (35°)	1672	81
	WF = Wide Flood (45°)	1417	69
SEN-3R-F-16L	NF = Narrow Flood (25°)	1387	87
	FL = Flood (35°)	1416	68
	WF = Wide Flood (45°)	1210	58
SEN-3R-WW-16L	WW = Wall Wash	798	40
SEN-3S-A-16L	NF = Narrow Flood (25°)	1531	75
	FL = Flood (35°)	1676	82
	WF = Wide Flood (45°)	1409	69
SEN-3S-F-16L	NF = Narrow Flood (25°)	1331	64
	FL = Flood (35°)	1412	78
	WF = Wide Flood (45°)	1169	56
SEN-3S-WW-16L	WW = Wall Wash	817	41

Multiplier Tables

CRI	Conversion Factor
80	1.15
90	1

CCT	Conversion Factor
2700K	0.95
3000K	1.00
3500K	1.05
4000K	1.08

Reflector Finish	Conversion Factor
Semi-Specular (SS)	0.99
Matte White (WH)	0.99
Matte Black (BL)	0.98
Specular (SP)	1.00
Chrome Black (CB)	0.98
Gold (GD)	0.98

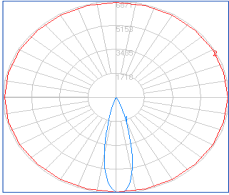
SENSE 3.0

Adjustable Downlight

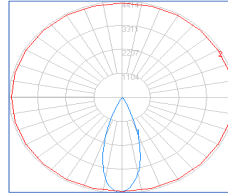


PHOTOMETRY

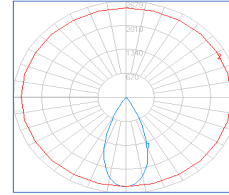
SEN-3R-A-16L-NF-930



SEN-3R-A-16L-FL-930



SEN-3R-A-16L-WF-930



IES Test Information	
Test File	S100R1-18W-930-25_LENS Version
Lumens	1537
CBCP (cd)	6787
Power (W)	21
Efficacy (LPW)	75
CRI	90
CCT	3000K
Spacing Criteria (S/H)	0.4
Beam Angle (°)	27

Candlepower Distribution	
Angle (°)	Average (cd)
10	4873
20	1223
30	100
40	19
50	2
60	1
70	0
80	0
90	0

Zonal Lumen Summary		
Zone	Lumens	% Fixture
0-30	1500	97.6%
0-60	1536	99.9%
0-90	1537	100.0%

Cone data				
Fixture Height		Avg	Beam Diameter	
ft	m	(fc)	ft	m
3.3	1	435	1.3	0.4
6.6	2	109	3.0	0.9
9.8	3	48	4.6	1.4
13.1	4	27	6.2	1.9
16.4	5	17	7.9	2.4

IES Test Information	
Test File	S100R1-18W-930-36_LENS Version
Lumens	1672
CBCP (cd)	4342
Power (W)	21
Efficacy (LPW)	81
CRI	90
CCT	3000K
Spacing Criteria (S/H)	0.6
Beam Angle (°)	37

Candlepower Distribution	
Angle (°)	Average (cd)
10	3664
20	1827
30	345
40	36
50	1
60	0
70	0
80	0
90	0

Zonal Lumen Summary		
Zone	Lumens	% Fixture
0-30	1578	94.4%
0-60	1672	100.0%
0-90	1672	100.0%

Cone data				
Fixture Height		Avg	Beam Diameter	
ft	m	(fc)	ft	m
3.3	1	270	2.3	0.7
6.6	2	67	4.3	1.3
9.8	3	30	6.6	2
13.1	4	17	8.5	2.6
16.4	5	11	10.8	3.3

IES Test Information	
Test File	S100R1-18W-930-50_LENS Version
Lumens	1417
CBCP (cd)	2494
Power (W)	21
Efficacy (LPW)	69
CRI	90
CCT	3000K
Spacing Criteria (S/H)	0.7
Beam Angle (°)	46

Candlepower Distribution	
Angle (°)	Average (cd)
10	2234
20	1479
30	547
40	111
50	15
60	1
70	0
80	0
90	0

Zonal Lumen Summary		
Zone	Lumens	% Fixture
0-30	1197	84.5%
0-60	1416	99.9%
0-90	1417	100.0%

Cone data				
Fixture Height		Avg	Beam Diameter	
ft	m	(fc)	ft	m
3.3	1	149	2.6	0.8
6.6	2	37	5.2	1.6
9.8	3	17	8.2	2.5
13.1	4	9	10.8	3.3
16.4	5	6	13.5	4.1

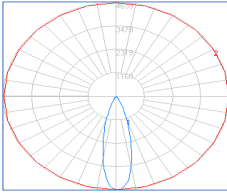
SENSE 3.0

Adjustable Downlight

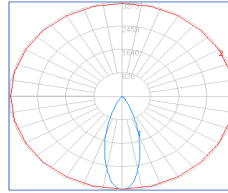


PHOTOMETRY

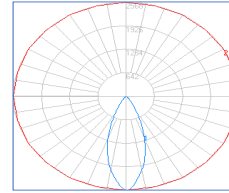
SEN-3R-F-16L-NF-930



SEN-3R-F-16L-FL-930



SEN-3R-F-16L-WF-930



IES Test Information	
Test File	S100R2-18W-930-25_LENS Version
Lumens	1387
CBCP (cd)	4616
Power (W)	21
Efficacy (LPW)	67
CRI	90
CCT	3000K
Spacing Criteria (S/H)	0.4
Beam Angle (°)	29

Candlepower Distribution	
Angle (°)	Average (cd)
10	3331
20	1253
30	278
40	60
50	19
60	2
70	0
80	0
90	0

Zonal Lumen Summary		
Zone	Lumens	% Fixture
0-30	1265	91.2%
0-60	1386	99.9%
0-90	1387	100.0%

Cone data				
Fixture Height		Avg	Beam Diameter	
ft	m	(fc)	ft	m
3.3	1	288	1.6	0.5
6.6	2	72	3.3	1
9.8	3	32	4.9	1.5
13.1	4	18	6.6	2
16.4	5	12	8.2	2.5

IES Test Information	
Test File	S100R2-18W-930-36_LENS Version
Lumens	1416
CBCP (cd)	3247
Power (W)	21
Efficacy (LPW)	68
CRI	90
CCT	3000K
Spacing Criteria (S/H)	0.5
Beam Angle (°)	36

Candlepower Distribution	
Angle (°)	Average (cd)
10	2608
20	1383
30	463
40	102
50	21
60	2
70	1
80	0
90	0

Zonal Lumen Summary		
Zone	Lumens	% Fixture
0-30	1217	85.9%
0-60	1414	99.9%
0-90	1416	100.0%

Cone data				
Fixture Height		Avg	Beam Diameter	
ft	m	(fc)	ft	m
3.3	1	202	2.0	0.6
6.6	2	50	4.3	1.3
9.8	3	22	6.2	1.9
13.1	4	13	8.5	2.6
16.4	5	8	10.5	3.2

IES Test Information	
Test File	S100R2-18W-930-45_LENS Version
Lumens	1210
CBCP (cd)	2566
Power (W)	21
Efficacy (LPW)	58
CRI	90
CCT	3000K
Spacing Criteria (S/H)	0.6
Beam Angle (°)	38

Candlepower Distribution	
Angle (°)	Average (cd)
10	2027
20	1203
30	422
40	104
50	24
60	3
70	1
80	0
90	0

Zonal Lumen Summary		
Zone	Lumens	% Fixture
0-30	1015	83.9%
0-60	1209	99.9%
0-90	1210	100.0%

Cone data				
Fixture Height		Avg	Beam Diameter	
ft	m	(fc)	ft	m
3.3	1	154	2.3	0.7
6.6	2	39	4.6	1.4
9.8	3	17	6.9	2.1
13.1	4	10	8.9	2.7
16.4	5	6	11.2	3.4