

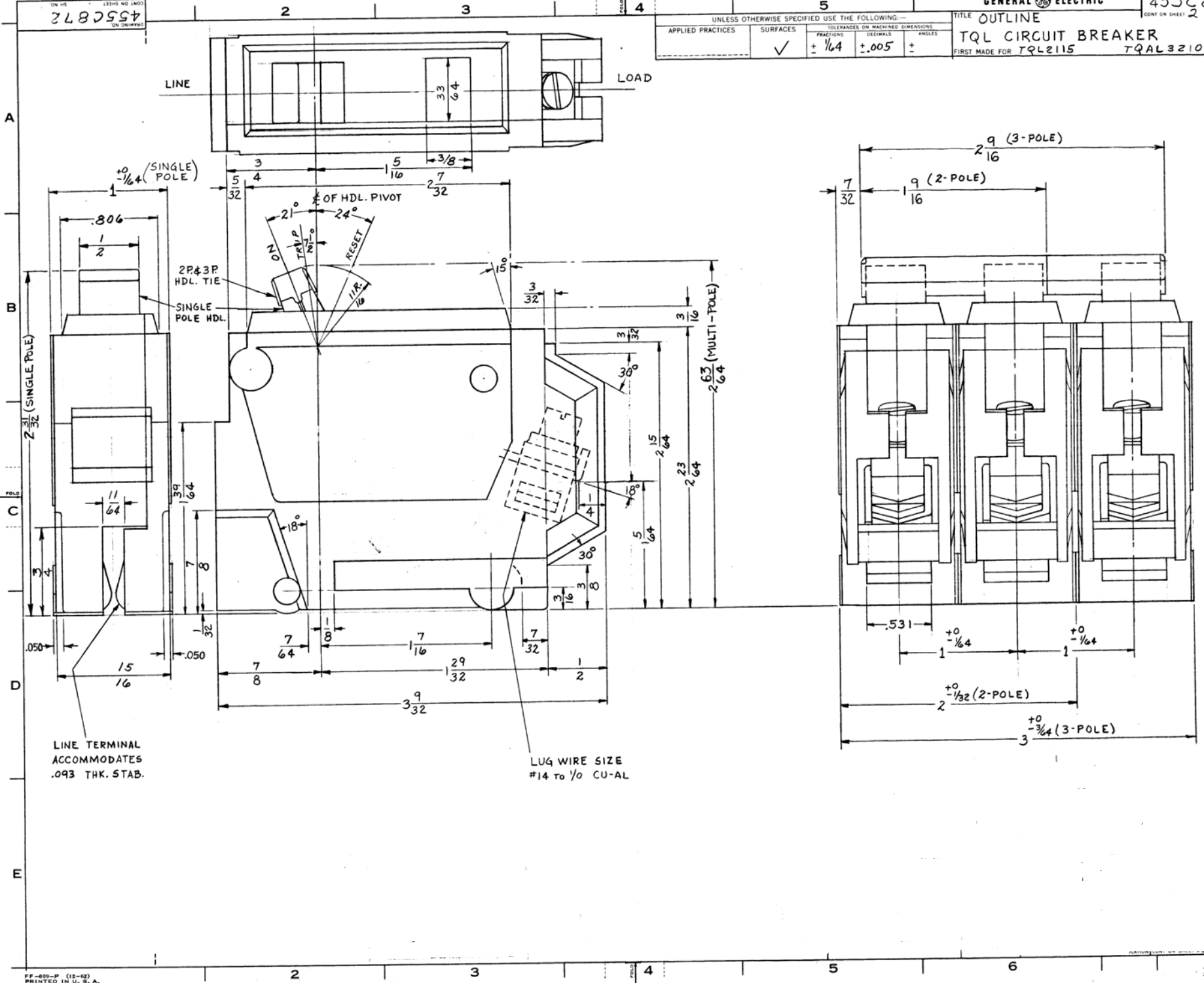
ON THE 133HS NO. 1402
 455C872
 (ON DRAWING)

GENERAL ELECTRIC 455C872
 (CONT. ON SHEET 2) SH. NO. 1

UNLESS OTHERWISE SPECIFIED USE THE FOLLOWING:

APPLIED PRACTICES	SURFACES	TOLERANCES ON MACHINED DIMENSIONS		
		FRACTIONS	DECIMALS	ANGLES
✓	✓	$\pm \frac{1}{64}$	$\pm .005$	-

TITLE OUTLINE
 TQL CIRCUIT BREAKER
 FIRST MADE FOR TQL2115 TQAL32100



REV. NO. 1