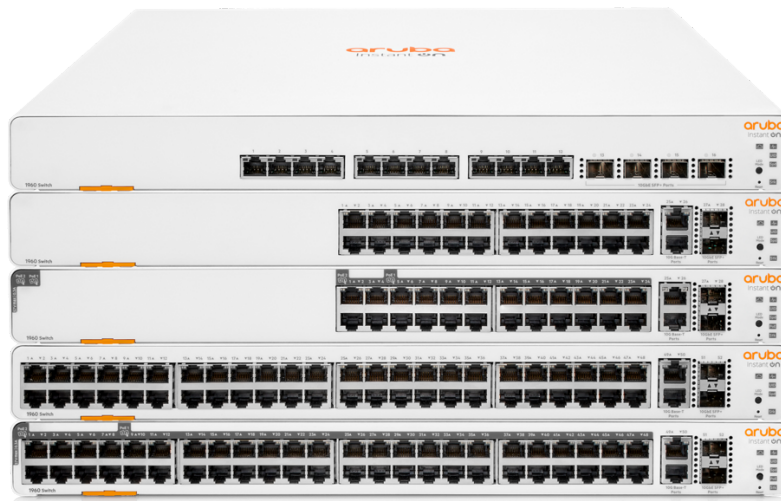


HPE Networking Instant On Switch 1960



What's new

- Simplify network management by stacking up to (four) 4 Aruba Instant On 1960 switches and managing them through one single IP address. Stacking supported via local and cloud-managed stacking modes.
- Smart-managed layer 2+ Ethernet access switch series ready to deploy in 12-port, 24-port, and 48-port for non-PoE and PoE (supports Class 4 and Class 6 PoE) models.
- The Aruba 1960 aggregation switch comes with twelve (12) 10GBase-T and four (4) SFP+ ports, providing 10G connectivity to servers, network

Overview

Aruba Instant On 1960 Switches are advanced, smart-managed, fixed configuration Gigabit stackable switches designed for small and growing businesses that are easy to deploy and affordable. These switches are designed to scale as business grows, making adding more employees, devices and applications simple. Aruba Instant On 1960 switches are made to handle today's bandwidth-heavy applications like voice and video conferencing, enabling consistent connectivity to improve user experience and application performance. These switches come with flexible management option: local web GUI or Instant On mobile app and cloud-based web portal.

storage devices and access switches alike.

- For environments with heavy bandwidth needs, 10GBase-T and SFP+ uplink ports deliver lightning-fast network speeds and nearly eliminates traffic bottlenecks.
- Aruba Instant On mobile app and/or cloud-based web portal for easy network management onsite or remotely.
- Limited Lifetime Warranty.

Features

High-level Gigabit with 10GbE Networking for Advanced Small Businesses

Each model of the Aruba Instant On 1960 Switch Series includes four 10GbE connections to connect to servers, network storage devices, or to other switches.

Two connections of 10GBASE-T deliver 10GbE over copper Category 5/6a cabling for simple, affordable, high-bandwidth connections to a maximum distance of 100 meters.

With PoE models, up to 30W PoE power delivery is available for Class 4 PoE devices like access points, surveillance cameras and VoIP phones, and up to 60W PoE power delivery is available for Class 6 PoE devices like pan-tilt zoom cameras and video-enabled IP-phones.

Simplify Network Deployment and Management for Small Organizations

The Aruba Instant On 1960 Switch series offers a complete portfolio for increased small business flexibility. It consists of six models including two (2) 24-port and two (2) 48-port models in PoE and non-PoE configurations, a 12-port multi-rate switch, and a 12-port 10-Gigabit aggregation switch.

The 12-port, 24-port, and 48-port PoE models come with a power budget of 480W, 370W and 600W respectively to support the latest PoE-powered IoT devices.

The Aruba Instant On 1960 Switch series can be deployed using two management modes – Instant On cloud-management (access via mobile app and/or web portal) and the local web GUI.

Each switch has a pull-out tag, known as a luggage tag, on the front panel of the switch.

The tag includes a QR code that includes switch ID information (SKU number, SKU name, serial number, and MAC address) for easy switch onboarding through Instant On mobile app.

Ease of Use with Cloud-Managed Stacking

The Aruba Instant On mobile app and cloud-based web portal make cloud-managed stacking easy — just follow the recommendations to stack up to four (4) Aruba Instant On 1960 switches and manage as a single entity.

The Aruba Instant On mobile app automatically detects members, making multiple stack members easy to setup and manage remotely.

Automated configurations and streamlined workflows allow users to manage all stack members through one single dashboard without the need for device reboot.

Robust Security to Protect Your Network

The Aruba Instant On 1960 Switch Series lets you use VLANs and Access Control Lists to set bounds on what data can be seen by which users.

Leverage 802.1X with a RADIUS server to ensure only known and authorized users can access your network.

Supports Automatic denial-of-service (DOS) monitors and protects the network against malicious attacks.

Technical specifications

HPE Networking Instant On Switch 1960

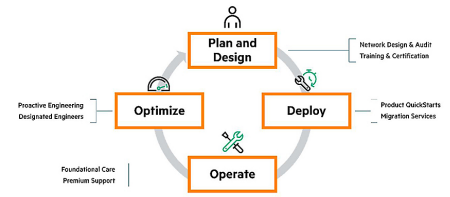
Ports	48 10/100/1000 RJ-45 ports, 2 SFP+ 10GbE ports, 2 10GBASE-T ports, maximum, depending on model. PoE/PoE+ available on select models.
Memory and processor	Single Core ARMv7 Cortex-A9 @ 2Ghz, maximum, depending on model
Throughput	238 Mpps, maximum depending on model
Switching capacity	320 Gbps, maximum, depending on model
PoE capability	600W maximum, depending on model
Stacking capabilities	4H height
Management features	Aruba Instant On Cloud Web browser SNMP Manager
Input voltage	100 - 240 VAC
Operating temperature	0-40°C, 0-10,000 ft
Power consumption	790W, maximum, depending on model
Product dimensions (metric)	40.28 x 44.25 x 4.40 cm
Weight	4.9 kg, maximum, depending on model

For additional technical information, available models and options, please reference the QuickSpecs

HPE Aruba Networking Services

HPE Aruba Networking services simplify and accelerate the network technology lifecycle, enabling your network to scale with better predictability and cost-effectiveness. Whether you operate your own network and need to improve your IT efficiencies, or you want to offload some of the burden, we have the services you need to reach your goals.

Learn more about what HPE Services - Aruba Networking has to offer at: arubanetworks.com/services/



Support Services from HPE Aruba Networking

Our support portfolio provides the essential support elements as well as proactive and preventive features to help you improve your team's productivity and get the most from your network. Our support customers benefit from faster issue resolution, simplified operations and efficiencies, and reduced network issues.

Professional Services from HPE Aruba Networking

With deep intellectual capital and purpose-built tools, our team delivers a range of standard and custom professional services designed to accelerate your value from HPE Aruba Networking technology.

Project based services

include:

- Planning, audit, and assessment
- Architecture review and design
- Deployment, migration, and knowledge transfer

Annual subscription services include:

- Network optimization
- Intelligent Operations
- Customer Experience Management

Make the right purchase decision. Contact our presales specialists.

[Find a partner](#)



Chat now (sales)



Call now



Buy now



Share now



Get updates

Our [Education Services](#) allow your team to come up to speed quickly.

HPE Aruba Networking Network as-a-Service (NaaS)

Our NaaS solution, HPE Aruba Networking Managed Connectivity Services, part of the HPE GreenLake services family, simplifies network operations, accelerates equipment handling, and increases the value of your HPE Aruba Networking network. If you need expert guidance and automation-based operations for your team, please explore the NaaS approach from HPE Aruba Networking [here](#).

© Copyright 2024 Hewlett Packard Enterprise Development LP. The information contained herein is subject to change without notice. The only warranties for Hewlett Packard Enterprise products and services are set forth in the express warranty statements accompanying such products and services. Nothing herein should be construed as constituting an additional warranty. Hewlett Packard Enterprise shall not be liable for technical or editorial errors or omissions contained herein.

Parts and Materials: HPE will provide HPE-supported replacement parts and materials required to maintain the covered hardware.

Parts and components that have reached their maximum supported lifetime and/or the maximum usage limitations as set forth in the manufacturer's operating manual, product quick-specs, or the technical product data sheet will not be provided, repaired, or replaced as part of these services.

Image may differ from the actual product PSN1014081822BEEN, March, 2024.