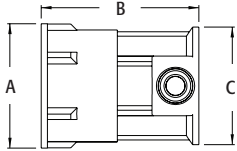


Zinc Combination Couplings EMT to Rigid

EMT set-screw to screw-in rigid metal conduit. Zinc die-cast.



2400

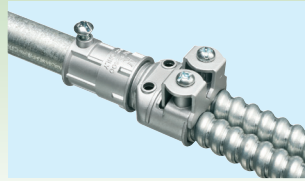


| CATALOG NUMBER | UPC/DCI/NAED MFG #018997 | TRADE SIZE | UNIT PKG | STD PKG | DIM A | DIM B | DIM C |
|----------------|--------------------------|----------------------------------|----------|---------|-------|-------|-------|
| 2400 | 06920 | 1/2" EMT to 1/2" female threaded | 50 | 50 | 1.000 | 1.267 | .946 |
| 2410 | 06921 | 3/4" EMT to 1/2" female threaded | 50 | 50 | 1.000 | 1.412 | 1.200 |
| 2411 | 06922 | 3/4" EMT to 3/4" female threaded | 50 | 50 | 1.210 | 1.475 | 1.200 |

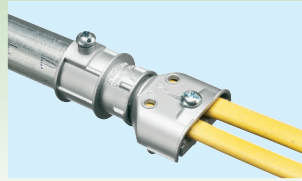
Use with any listed fitting.



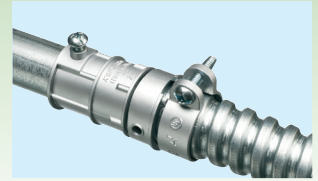
INSTALLATION SHOTS



1/2" EMT to 2400 to SG3838 with flexible metal conduit



3/4" EMT to 2410 to 846 with NM cable



3/4" EMT to 2411 to L422 with flexible metal conduit