

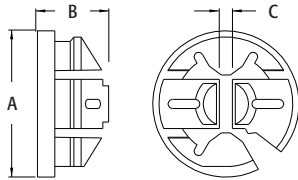
## Black Button® Non-Metallic Push-In Connectors

For NM cable. Listed for both **1 or 2** cables (together or individually).

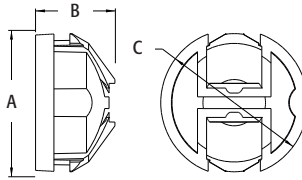
### FEATURES AND BENEFITS

- Installs easily...snaps into KO using light finger pressure
- Cables insert without a struggle for a smooth installation
- Holds wires securely—meets and exceeds UL pullout tests
- Simple to remove with a twist of a screwdriver
- Lowest cost NM cable connector available today

CATALOG NUMBER	UPC/DCI/NAED MFG #018997	TRADE SIZE	KO SIZE	UNIT PKG	STD PKG	DIM A	DIM B	DIM C
NM94	05488	3/8	1/2	250	1000	1.010	.492	.090
NM940	72156	3/8	1/2	100	1000	1.010	.492	.090
NM942	04281	3/8	1/2	250	1000	.996	.540	1.000
NM95	10956	3/4	3/4	50	500	1.290	.579	.040
NM96	72158	1	1	25	250	1.648	.683	.156



NM94, NM940, NM95, NM96



NM942 & NM94X (See White Button™ below)

\*NM942 features a divider to separate cables.  
Refer to pages C-13 and C-14 for complete cable ranges.  
**PATENTED.**

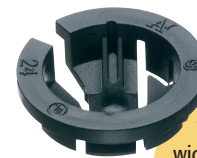


NM94



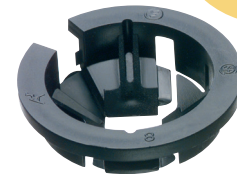
NM942

**TWO SEPARATE OPENINGS FOR CABLE**



NM95

**NM95**  
Works with a wide variety of NM cables including NMB-PCS and Canada's NMD90



NM96

### INSTALLATION INSTRUCTIONS

1. Disconnect electrical power.  
Insert connector into knockout.
2. Push non-metallic sheathed cable into the connector to desired length.



### REMOVAL

If necessary, the NM94 series may be removed with a screwdriver.

1. Slip screwdriver under NM connector and twist.
2. NM94 pops out of the knockout.

