

## Overview

The following guide provides instruction on how to import programming resources for use with DemoPad products. These resources contain drivers/command sets for WyreStorm equipment along with popular 3rd-party AV devices and sources.

## Before You Begin

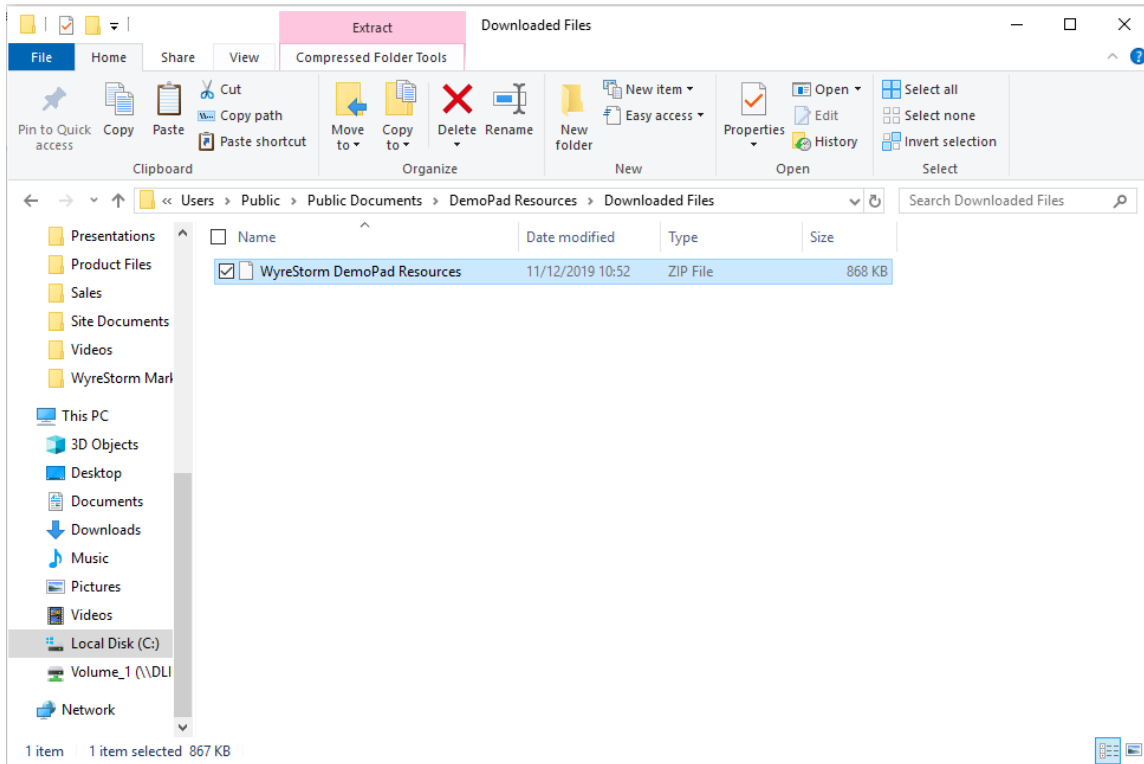
Before proceeding with the steps provided in this document ensure that the following items are on hand or completed.

Latest version of DemoPad Designer software with a valid license key .....

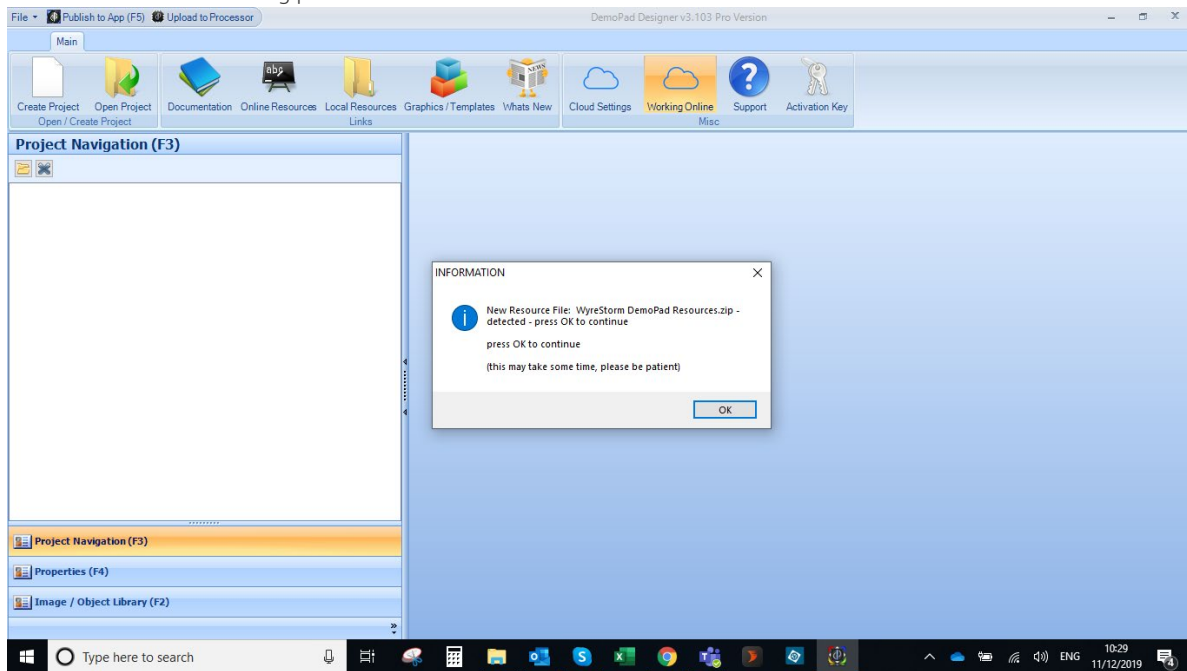
Centro hardware gateway (CENTRO-C, CM or 8M).....

## Importing Resources

1. Download the **WyreStormDemoPadResources.zip** file from [wyrestorm.com](http://wyrestorm.com)
2. Ensure that DemoPad Designer is closed and navigate to the DemoPad resources folder. The default directory is:  
**C:\Users\Public\Documents\DemoPad Resources\Downloaded Files**
3. Copy the **WyreStormDemoPadResources.zip** into this directory. Do not unzip the files, DemoPad Designer will auto-extract the contents of the zip file.

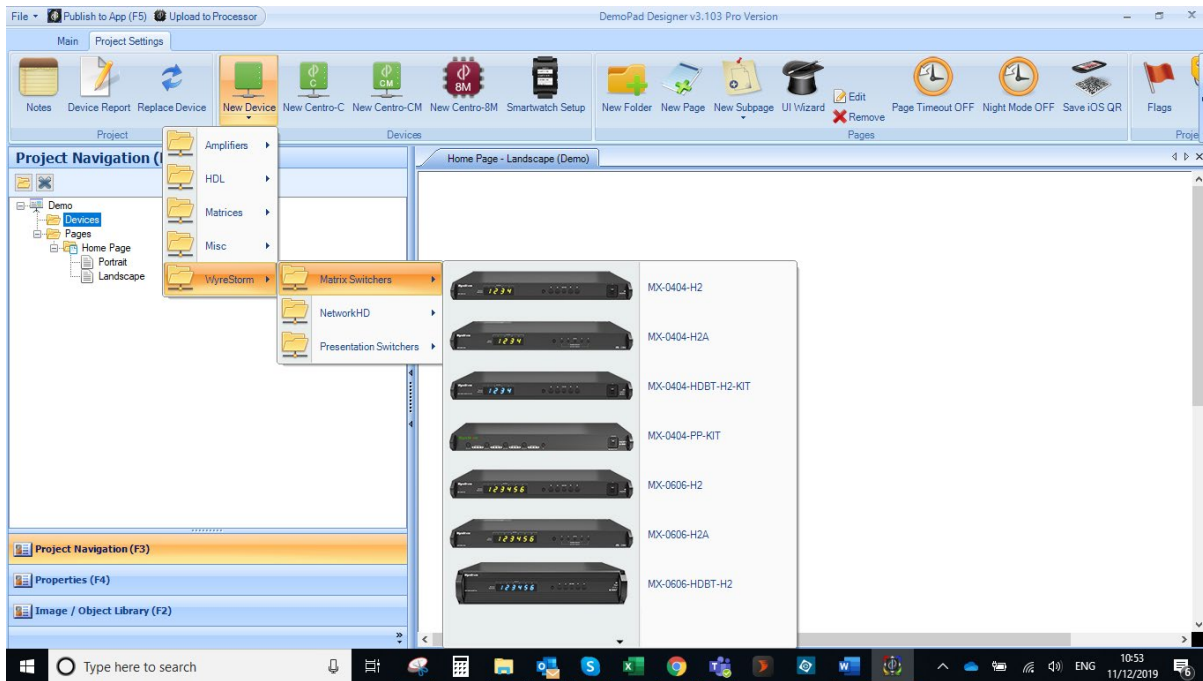


- Once the zip file is copied, open DemoPad Designer. If done correctly, you will be prompted with a message stating a new file has been detected and asking permission to extract the contents. Press Ok to continue.



## Selecting a WyreStorm Device

When the extraction is complete, you will then be able to access all WyreStorm devices. To choose a WyreStorm device navigate to Project Properties > New Device (Select Down Arrow) > WyreStorm

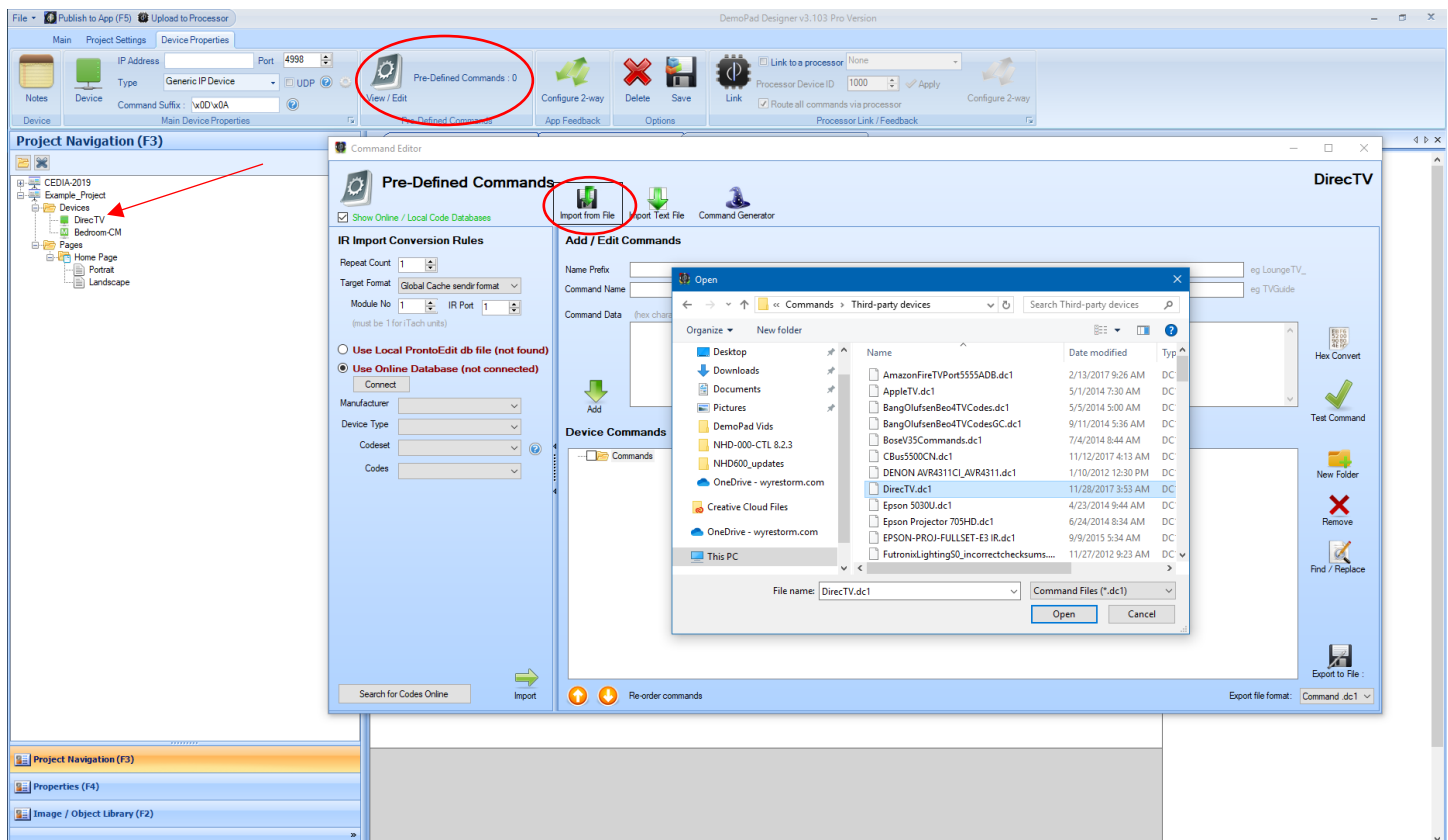


## 3<sup>rd</sup>-Party Devices

Also, part of the DemoPad Resources are drivers/command sets for 3<sup>rd</sup>-party equipment. To add a command set to control a 3<sup>rd</sup>-party device perform the following.

### Controlling a 3<sup>rd</sup>-party device via LAN

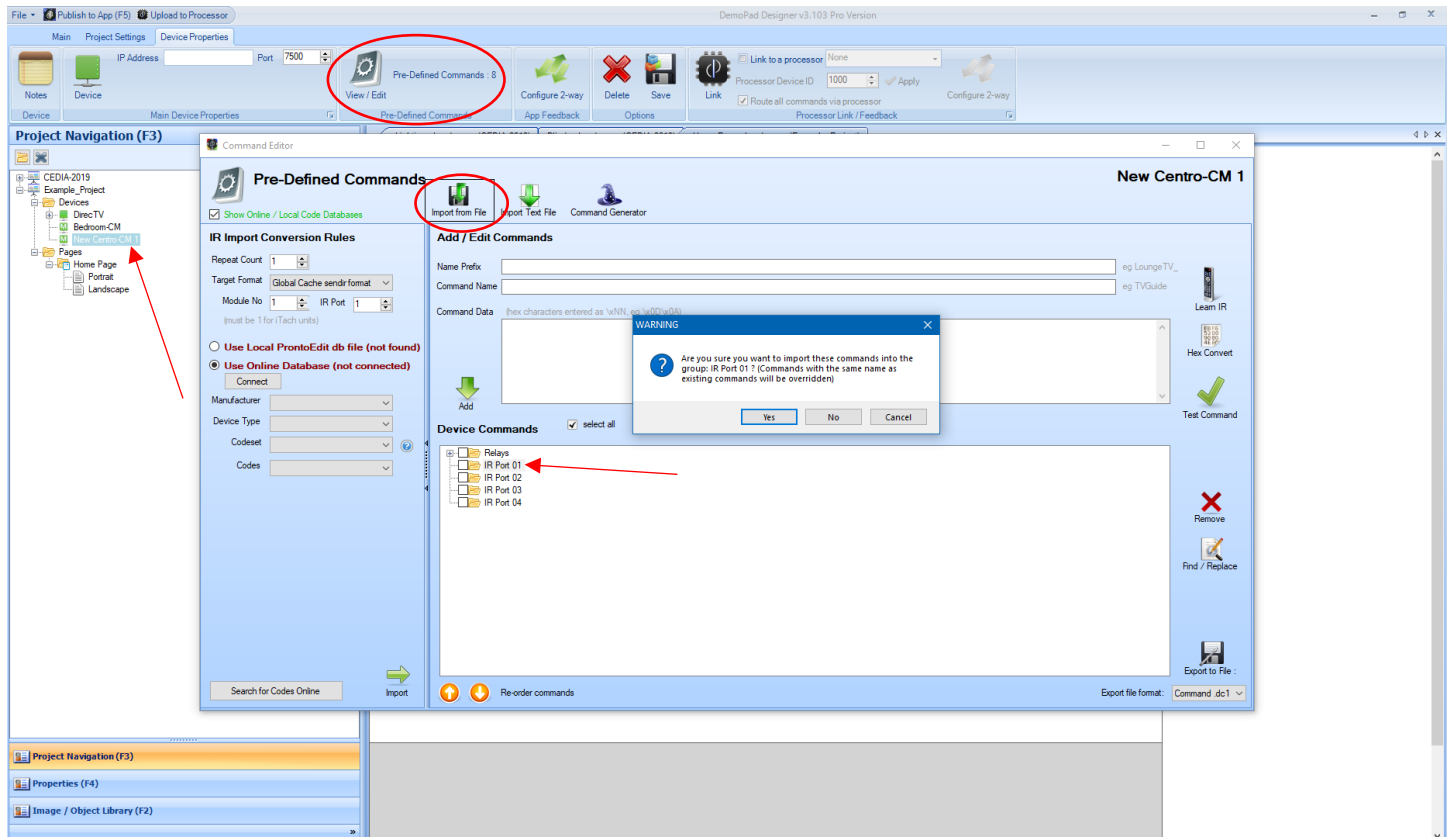
1. Navigate to **Project Settings > New Device (Click Button)**
2. Once the New Device has been added select it from the Project Navigation menu at the left. Then navigate to **Pre-defined Commands > Select the Grey Cog Notepad**
3. From the pop-up window select the **Import from File** button.
4. Select the Third-party devices folder and select an appropriate command set for your device.



## Controlling an IR or RS232 device via a Centro Gateway

If your 3<sup>rd</sup>-party device is controlled via IR or RS232, then a Centro-XX gateway will be required. To link commands to an output of a Centro gateway perform the following.

1. Navigate to **Project Settings > New Centro-xx >**
2. Select the Centro device from the Project Navigation menu then navigate to **Pre-defined Commands > Select the Grey Cog Notepad**
3. In the **Device Commands** section select the appropriate output of the Centro gateway that will be used to control the 3<sup>rd</sup>-party device (e.g. IR Port 1).
4. Select the **Import from File** button > **Select Third-party device folder > Select a command set file**
5. Repeat the above steps for any other 3<sup>rd</sup>-party devices being controlled through a Centro gateway



## Contacting Support

Phone: North America: 844.280.WYRE (9973) | UK/EMEA: +44 (0) 1793 230 343

Email: [Support@WyreStorm.com](mailto:Support@WyreStorm.com)

Online Chat (Accessible through website): <http://WyreStorm.com/Contact-Tech-Support>