



# HALO<sup>®</sup>

ML Collection  
LED Modular Recessed Lighting System

# Introduction

## The ML Concept

The HALO™ Modular LED recessed lighting system provides a broad range of lighting solutions ideal for residential and commercial use including single and multi-family dwellings, hospitality, retail, office and institutional spaces. The ML family delivers the energy savings, long life and sustainability of LED with excellent optical control providing cost effective and visually comfortable lighting.

Apertures include full cone reflectors, baffles, open and lens wall washers and directional styles. These combinations provide useful distributions including ambient, task, wall wash and accent facilitating a balanced lighting layout. Choose from round or square forms and a broad range of finishes to complement any décor.

LED module and trim combinations are compatible with industry standard 4, 5 and 6 inch housing types and can be used for new construction as part of the electrical rough-in or install from below - ideal for remodeling applications. They can also be retrofit into existing housings enabling older light-source technologies to be easily upgraded to LED.

With a color rendering index (CRI) of 90 minimum the ML family delivers excellent color quality and can be specified in 2700, 3000, 3500 and 4000K correlated color temperatures (CCT). It can be used to meet the IECC and the State of California Title 24 high efficacy luminaire compliance. Consult the California Energy Commission Title 20 Appliance Efficiency Database for current listings. Meets the State of California voluntary lamp standards. Most combinations are ENERGY STAR® listed, reference qualified product listing.



Innovation you can rely on



The US Environmental Protection Agency's ENERGY STAR® program is designed to identify and promote energy efficient products and buildings. Cooper Lighting Solutions is proud to be an industry leader of certified products including many of our HALO recessed downlights. [www.energystar.gov](http://www.energystar.gov)



International Energy Conservation Code (IECC) establishes energy-related heating, cooling, water heating, electrical and lighting system standards for residential, multi-family, and commercial buildings. [www.iccsafe.org](http://www.iccsafe.org)



HALO luminaires are manufactured and designed in accordance with the specifications outlined in Underwriters Laboratories Standard for Safety – Luminaires 1598. These luminaires additionally comply with the applicable requirements found within the National Electrical Code (NEC), NFPA 70.

Products bearing the cULus Listed marks indicate that the luminaires have been evaluated by Underwriters Laboratories, and are found to be compliant with the product specific requirements for the United States and Canada. [www.ul.com/](http://www.ul.com/)



Cooper Lighting Solutions supports state codes enforcing more stringent and environmentally protective standards such as California Energy Commission's Title 24 Energy Efficiency standards. [www.energy.ca.gov/title24](http://www.energy.ca.gov/title24) and [www.energy.ca.gov/appliance](http://www.energy.ca.gov/appliance)

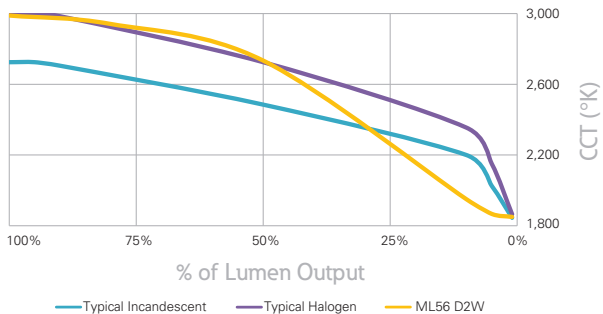


RoHS Directive - Restriction of Hazardous Substances. This global initiative seeks to eliminate hazardous materials in products. Key materials being eliminated from products through RoHS include: cadmium, mercury and lead among others.

# D2W™

Select ML combinations are available in the D2W dim-to-warm option mimicking the black body dimming response of tungsten halogen lamps warming the output from approximately 3000 to 1850K CCT.

## Dimming Profile



- Dims smoothly from 3000K to 1850K creating a rich, warm glow within the space.
- Maintains 90 CRI throughout the dimming range.
- Available in 600, 900, and 1200 lumen outputs.
- Use the same 120V dimmers as with any of the ML4 and ML56 LED modules.

# D2W™

# Lighting Control Solution

Set the mood

# HALO HOME™

Simple. Smart. Secure.

## HALO Home In-wall Smart Dimmer

HIWMA1BLE40AWH

Controls standard lighting fixtures with dimmer or HALO Home mobile app.

Features include:

- ON/OFF
- Dim
- Group
- Scene
- Schedule





# ML4

## 4-inch LED downlighting system

The ML4 system is comprised of a housing, LED module, and round or square 2-inch aperture pinhole trims. This compact assembly installs from below the ceiling in standard 4-inch line voltage housings suitable for 2x6 residential framing or shallow plenum commercial construction.

For even tighter spacing an ultra-shallow install from below housing is available and is suitable for 2x4 framing. For ceiling types that make recessed lighting difficult, like concrete pour, round and surface cylinders support direct attachment to finished ceiling surfaces.

Although diminutive in size the ML4 delivers powerful beams of light providing the optical control and color quality typically associated with low voltage tungsten-halogen MR16 lamps. Delivered center beam candlepower (CBCP) of ML4 LED exceeds 50W low voltage MR16 lamps with significantly higher candela per watt (Cd/W).



Simple, compact, accurate



Housing + Module + Trim  
= Complete luminaire



## ML4 Module / Optic

### Balance efficiency with optical control

The ML4 module combines a chip on board LED array, driver and heat sink into an integrated light engine providing a highly efficient and reliable source of light. The precision molded optic organizes the source flux producing tightly controlled and useful beams of light.

The ML4 module can be ordered with either the 25° narrow flood or 40° flood optics preinstalled and are suitable for a wide range of applications. Alternate beam patterns are possible - 15° spot and 55° wide flood optics are available as accessories and are easily interchangeable in the field. A media holder integral with the optic accepts industry standard 2" diameter lens providing additional creative control.







### ML4 optics

**TIR45SP15**  
15 degree spot



**TIR45NFL25**  
25 degree narrow flood



**TIR45FL40**  
40 degree flood



**TIR45WFL55**  
55 degree wide flood



**TIR50AWW25**  
25 degree narrow flood  
asymmetric / wall wash



**TIR45MH12PK**  
replacement media holder



media holder with lens  
installed on optic

### ML4 Ordering Information

A complete luminaire consists of a housing, LED module and trim. Order separately.

Models	Lumens	Distribution	CRI/CCT	Driver	Accessories
ML4D= 4" LED module	09=900 lumens (nominal)	NFL=25° narrow flood FL=40° flood	927=90 CRI min, 2700K CCT 930=90 CRI min, 3000K CCT 935=90 CRI min, 3500K CCT 940=90 CRI min, 4000K CCT D2W=90 CRI (min) color shifts from 3000 to 1850 K mimicking black body dimming	E=UNV 120 - 277V 50-60Hz, LE & TE phase cut 5% dimming at 120V only E010=120-277V 50-60 Hz 0-10V analog dimming to 5%	TIR45SP15 = 15° spot TIR45NFL25 = 25° narrow flood TIR45FL40 = 40° flood TIR45WFL55 = 55° wide flood TIR50AWW25 = 25° narrow flood asymmetric / wall wash TIR45MH12PK = replacement media holder, package of 12 L100 Series = 2.0" lens and filters, see spec sheet

# ML4 Trims

## The finishing touch

TL4 series trims are offered in four luxurious electro-plated finishes; brushed nickel, oil rubbed bronze, brushed copper and German bronze. Use to complement your thoughtfully selected interior finishes.

The TL4 trims are available in three trim types; open, lens, and lens wall wash.

The trims are attached by four powerful rare earth Neodymium magnets; they float on a bubble of magnetic flux keeping the trims held securely in place.



white



black



german bronze



brushed copper



brushed nickel



oil rubbed bronze

## Open pinhole

The round and square open pinhole apertures are optimized for use with beam forming optics delivering full output with visual cutoff and brightness control. Magnetic attachment makes installation a snap and allows for minor adjustment accommodating real-world construction tolerances. Available in painted and electro-plated finishes. Damp location listed.

### TL41R

2" round open pinhole



**TL41RMW**  
matte white flange



**TL41RBN**  
brushed nickel flange



**TL41RBCu**  
brushed copper flange



**TL41RMB**  
matte black flange



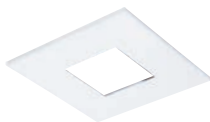
**TL41RORB**  
oil rubbed bronze flange



**TL41RGB**  
german bronze flange

### TL42S

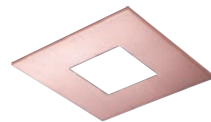
2" square open pinhole



**TL42SMW**  
matte white flange



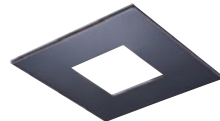
**TL42SBN**  
brushed nickel flange



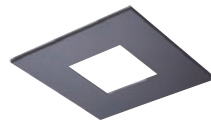
**TL42SBCu**  
brushed copper flange



**TL42SMB**  
matte black flange



**TL42SORB**  
oil rubbed bronze flange



**TL42SGB**  
german bronze flange

## Lens pinhole

The round and square lens pinhole apertures soften the light with an integral diffuse lens. Magnetic attachment makes installation a snap and allows for minor adjustment accommodating real-world construction tolerances. Available in painted and electro-plated finishes; the lens frame is available in white or black and color coordinated with the flange finish. Wet location listed.

### TL43R

2" round lens pinhole



**TL43R2GMWWB**  
matte white flange,  
white lens frame



**TL43R2GMWBB**  
matte black flange,  
black lens frame



**TL43R2GBNBB**  
brushed nickel flange,  
black lens frame



**TL43R2GBCuBB**  
brushed copper flange,  
black lens frame



**TL43R2GMBBB**  
matte black flange,  
black lens frame



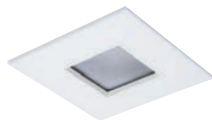
**TL43R2GORBBB**  
oil rubbed bronze flange,  
black lens frame



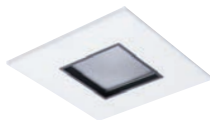
**TL43R2GGBBB**  
german bronze flange,  
black lens frame

### TL44S

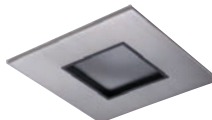
2" square lens pinhole



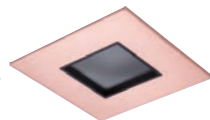
**TL44S2GMWWB**  
matte white flange,  
white lens frame



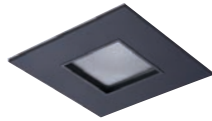
**TL44S2GMWBB**  
matte black flange,  
black lens frame



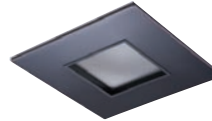
**TL44S2GBNBB**  
brushed nickel flange,  
black lens frame



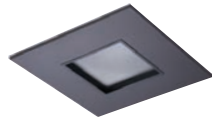
**TL44S2GBCuBB**  
brushed copper flange,  
black lens frame



**TL44S2GMBBB**  
matte black flange,  
black lens frame



**TL44S2GORBBB**  
oil rubbed bronze flange,  
black lens frame



**TL44S2GGBBB**  
german bronze flange,  
black lens frame

## Lens wall wash

The round and square lens wall wash apertures use the unique asymmetric optic that redirects light through a linear spread lens providing smooth vertical illumination. Use to light walls, paintings and textured surfaces including stone, masonry and wood. Magnetic attachment makes installation a snap and allows for minor adjustment accommodating real-world construction tolerances. The lens frame is available in white or black and color coordinated with the flange finish. Wet location listed.

### TL45R

2" round lens wall wash pinhole



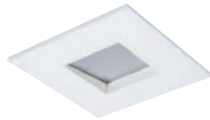
**TL45R6GMWWB**  
matte white flange,  
white lens frame



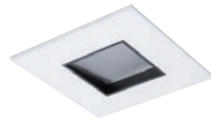
**TL45R6GMWBB**  
matte white flange,  
black lens frame

### TL46S

2" square lens wall wash pinhole



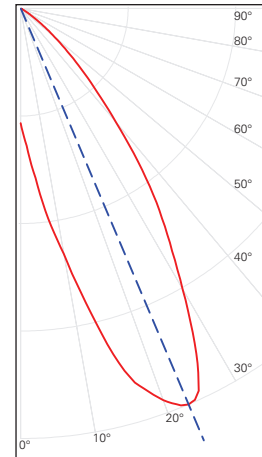
**TL46S6GMWWB**  
matte white flange,  
white lens frame



**TL46S6GMWBB**  
matte white flange,  
black lens frame

### Candle Power Distribution

TIR50AWW25 asymmetric wall wash optic



The TIR50AWW25 asymmetric optic is supplied with TL45R and TL46S wall wash trims to simplify ordering.



## Providing Accents

The asymmetric / wall wash optic combined with the open and lens pinhole apertures delivers a directional beam of light effective for accenting objects of interest including art and architecture.

The aiming angle is pre-set at 22.5 degrees, a useful mid-point adjustment, eliminating the need for individual elevation adjustment. This simple yet effective lighting technique provides contrast ratios creating visual interest and drama in your environments.



TIR50AWW25  
asymmetric wall wash



Installed in ML4 module



Complete unit with TL41RMW installed.



# Housings

## ML4 Housing Compatibility

### Halo LED

H995ICAT, H995RICAT

### Halo Shallow Housings

H99ICAT, H99RTAT, H99TAT, H1499ICAT, H1499RTAT, H1499T75,  
H1499TAT, E4ICATSB, E4TATSB, E4RTATSB

### Halo Ultra-Shallow Housings

H245ICAT, H245RICAT

### Halo Surface Mount Housings

HS4RMW, HS4RMB, HS4SMW, HS4SMB

Halo 4" LED housings



H995ICAT



H995RICAT



## Competitor Housing Compatibility

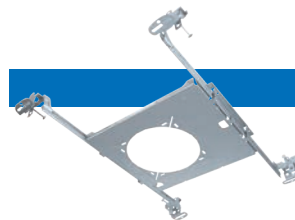
The ML4 comes with a dedicated LED connector for High Efficacy luminaire compliance (California Title 24, International Energy Conservation Code) and is cULus Listed for installation with Halo® recessed LED housings (H245ICAT, H245RICAT, H995ICAT, H995RICAT).

The ML4 is also compatible with a E26 Edison screw base adapter to accommodate many industry standard screw base housings. The series is cULus Listed and UL Classified for retrofit in Halo and others housings.



### 4" Housings

<b>Utilitech</b> CR04ICAT	<b>Lithonia Lighting®</b> L3, L3R	<b>Juno®</b> TC1, TC1R
<b>Thomas®</b> PS4	<b>Commercial Electric™</b> HBR2000B	<b>Progress Lighting®</b> P830-TG, P832-TG



### HL4RSMF

New construction rough-in frame for use with Halo 4-inch H245RICAT, H99RTAT, H1499RICAT, and E4RTATSB remodeler housings.  
**Note:** Remodeler housings are installed after ceiling is installed.

### Housings

#### Halo LED 4-inch

H995ICAT= 4" LED, Insulated Ceiling, Air-Tite, New Construction Housing  
H995RICAT= 4" LED, Insulated Ceiling, Air-Tite, Remodel Housing

#### Halo Ultra-Shallow LED 4-inch

H245ICAT= 4" LED, Insulated Ceiling, Air-Tite, Ultra-Shallow New Construction Housing  
H245RICAT= 4" LED, Insulated Ceiling, Air-Tite, Ultra-Shallow Remodel Housing

#### Halo Standard Housings 4-inch\*

H99ICAT= 4" IC, Air-Tite, Shallow New Construction Housing  
H99TAT= 4" Non-IC, Air-Tite, Shallow New Construction Housing  
H99RTAT= 4" Non-IC, Air-Tite, Shallow Remodel Housing  
E4ICATSB= 4" IC, Air-Tite, Shallow New Construction Housing  
E4TATSB= 4" Non-IC, Air-Tite, Shallow New Construction Housing  
E4RTATSB= 4" Non-IC, Air-Tite, Shallow Remodel Housing

#### Halo Low Voltage Housings 4-inch\*

H1499ICAT= 4" IC, Air-Tite, New Construction Housing, 120V - 12V Low Voltage MR16  
H1499TAT= 4" Non-IC, Air-Tite, Shallow New Construction Housing, 120V - 12V Low Voltage MR16  
H1499RTAT= 4" Non-IC, Air-Tite, Shallow Remodel Housing, 120V - 12V Low Voltage MR16  
H1499T75= 4" Non-IC, New Construction Housing, 120V/277V - 12V Low Voltage, MR16

### Accessories

T24HWKIT= Title 24 Cable harness kit used to convert incandescent and low voltage housings to LED.  
HL4RSMF= 4" round and square new construction rough-in frame\*\*



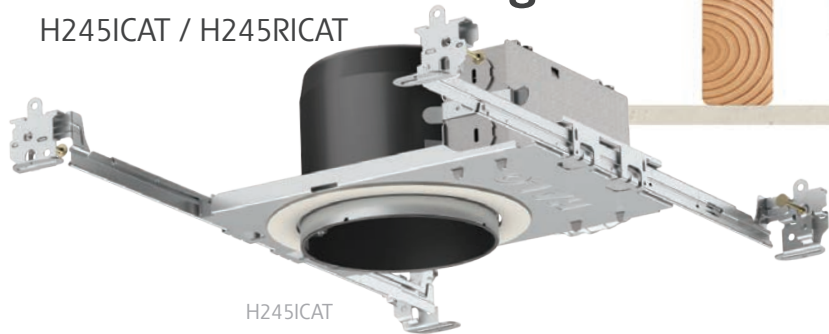
\*Use T24HWKIT, Title 24 Cable Harness Kit, to convert incandescent and low voltage housings to LED.

\*\*Compatible with H245RICAT, H99RTAT, H1499RICAT, and E4RTATSB remodeler housings.

Juno®, Lithonia Lighting®, Thomas® Lighting, Progress® Lighting and Commercial Electric™ and their product brand names, where identified above, are tradenames or trademarks of each respective company and Cooper Lighting Solutions makes no representations on these trademarks.

# Ultra-shallow housings

H245ICAT / H245RICAT



H245ICAT

- Suitable for 2x4 framing and shallow plenum construction
- Housing adjusts for 1/2" to 1-1/4" ceiling thickness
- Suitable for direct contact with air-permeable insulation and air tight
- Captive, pre-installed Got Nail!™ bar hangers adjust from 6" to 24"; integral nail penetrates standard and engineered lumber
- Slide-N-Side™ non-metallic (NM) wire traps allow wiring outside the box, 4-port push wire nuts for quick and reliable mains voltage connections



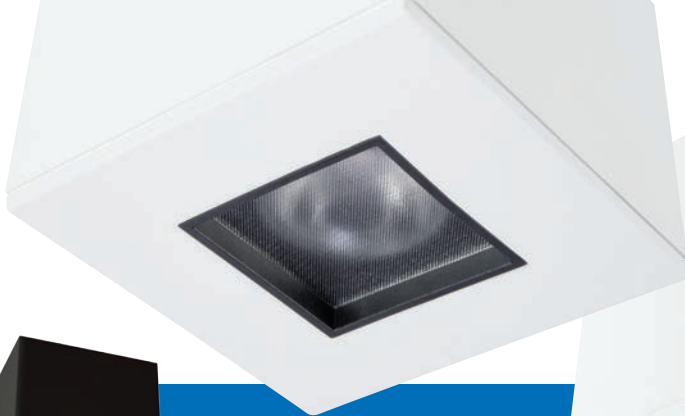
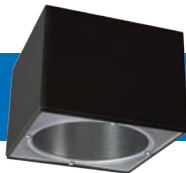
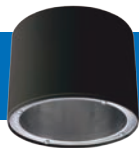
H245RICAT

- Suitable for 2x4 framing or shallow plenum construction
- Compatible with 3/8" to 3/4" ceiling thickness
- Retractable mounting springs are designed for easy installation and removal for service or splice inspection
- Quick Connect™ remodel wiring tray increases installation speed and reliability
- Hinged and captive door on junction box allows for easy access
- Insulated ceiling listed and Air-Tite™

# Surface Housing

Square and round surface mount

- round or square housing mounts to junction box
- spider plate allows alignment of square with architecture
- exclusively for use with Halo ML4 LED module and trims
- finishes: matte white and matte black



## Surface Mount Housing

HS4R= Surface round, 120-277V  
HS4S= Surface square, 120-277V

## Finish

MW=Matte white  
MB=Matte black

# ML56

## LED downlighting system

The Halo ML56 LED downlight collection is comprised of LED modules with 5" and 6" trims. ML56 LED modules are offered in three lumen packages across the 600, 900, and 1200 series - a versatile collection of energy-efficient LED downlights for general lighting in commercial and residential applications. The Halo ML56 LED 600, 900, 1200 series modules are for either new construction or retrofitting existing 5" and 6" compatible housings (Edison screw base adapter included). Halo LED ML56 collection features excellent color (90 CRI) and offers a wide selection of color temperatures (2700K, 3000K, 3500K, and 4000K).





high performance for volumetric spaces

\*E26 Edison Screw Base Adapter (included for retrofit of non-LED housings).

Housing + Module + Trim  
= Complete luminaire



# ML56 Module

## LED light engine

The ML56 light modules are integrated LED engines that include a LED chip package, LED driver, heat sink, and lens in a modular design that allows interchangeable use with designated ML56 5" and 6" LED trims.

The ML56 light module design features an inside frost diffusing lens that looks like a traditional lamp for visual comfort and aesthetic familiarity. The diffusing lens provides uniform illumination.



## ML56 Ordering Information

A complete luminaire consists of a housing, LED module and trim. Order separately.

LED Modules			Beam Forming Optic / Media 1200 Series Accessories*	ML56 System Accessories
<b>600 Series</b> ML5606927= 5"/6" LED module, 90CRI, 2700K ML5606930= 5"/6" LED module, 90CRI, 3000K ML5606935= 5"/6" LED module, 90CRI, 3500K ML5606940= 5"/6" LED module, 90CRI, 4000K	<b>900 Series</b> ML5609927= 5"/6" LED module, 90CRI, 2700K ML5609930= 5"/6" LED module, 90CRI, 3000K ML5609935= 5"/6" LED module, 90CRI, 3500K ML5609940= 5"/6" LED module, 90CRI, 4000K	<b>1200 Series</b> ML5612927= 5"/6" LED module, 90CRI, 2700K ML5612930= 5"/6" LED module, 90CRI, 3000K ML5612935= 5"/6" LED module, 90CRI, 3500K ML5612940= 5"/6" LED module, 90CRI, 4000K ML5612927D010= 5"/6" LED module, 90CRI, 2700K, 0-10V <sup>(1)</sup> ML5612930D010= 5"/6" LED module, 90CRI, 3000K, 0-10V <sup>(1)</sup> ML5612935D010= 5"/6" LED module, 90CRI, 3500K, 0-10V <sup>(1)</sup> ML5612940D010= 5"/6" LED module, 90CRI, 4000K, 0-10V <sup>(1)</sup>  <b>D2W - Dim to Warm Light Module</b> ML5612D2W930= 5"/6" DIM to warm LED module, 1200 lumen, 90CRI, 3000K to 1850K	<b>BFR56NFL</b> = Beam forming reflector kit, narrow flood, 25° nominal <b>BFR56MH</b> = Media holder, accepts one 3.45" lens. Requires BFR56NFL & L345SF, order separately <b>L345SF</b> = 3.45" diameter soft focus lens. Requires BFR56NFL and BFR56MH, order separately	<b>ML7RAB</b> =Retrofit adapter band for housings without torsion spring receivers. The ML7RAB kit supplies parts to retrofit four housings; the kit includes: 4 – Retrofit adapter bands with screws and locking wire nuts

\*Beam forming optics/media not recommended for use with ML5612D2W930 LED module.

\*For California non-E26 base product place -CA suffix at the end of catalog number (ie ML5606927-CA).

(1) UNV 120-277V 50-60Hz, 0-10V analog 5% dimming

Consult ML56 LED light module specification sheets for applicable trim listings with respective 600 Series, 900 Series and 1200 Series.

## 1200 Series module

For the 1200 series LED light modules, the diffusing lens is interchangeable with an optional 25° Narrow Flood (NFL) beam forming lens.



standard diffusing lens



narrow flood (NFL) lens

### 1200 Series optics

standard diffusing  
lens (included)



BFR56NFL  
narrow flood lens (NFL)



BFR56MH<sup>†</sup>  
media holder  
(requires BFR56NFL & L345SF, ordered separately)

L345SF  
soft focus lens  
(requires BFR56NFL & BFR56MH, ordered separately)



# Trims

## The finishing touch

Multiple 5" and 6" baffle, reflector, and eyeball options allow the Halo ML56 LED downlighting system to be used in a variety of interior spaces. Choose the desired trim size, finish, and style to meet the needs of the application.

- Reflector and baffle trims are wet location listed for shower applications. Eyeball trims are damp location listed.
- Reflector and baffle trims make the ML56 and any compatible housing Air-Tite.
- Consult ML56 LED light module specification sheets for applicable trim listings with respective 600 Series, 900 Series and 1200 Series.

### Trims

#### **590 Series - 5" LED Trims**

591WB=5" LED trim, polymer "dead-front", shallow white baffle & flange – shallow and standard housings  
(For use with 600 Series LED light modules only)

592SC=5" LED trim, specular reflector & white flange

592H=5" LED trim, haze reflector & white flange

592W=5" LED trim, white reflector & flange

593WB=5" LED trim, white micro-step baffle & flange

593BB=5" LED trim, black micro-step baffle & white flange

593SNB=5" LED trim, satin nickel micro-step baffle & flange

593TBZB=5" LED trim, tuscan bronze micro-step baffle & flange

594WB=5" LED directional trim, white eyeball, baffle & flange – shallow and standard housings

594SNB=5" LED directional trim, satin nickel eyeball, baffle & flange – shallow and standard housings

594TBZB=5" LED directional trim, tuscan bronze eyeball, baffle & flange – shallow and standard housings

595WW=5" LED trim, wall wash - specular reflector, repositionable specular kick reflector, white flange

596WB=5" LED trim, white shallow baffle & flange – shallow and standard housings

#### **690 Series - 6" LED Trims**

691WB=6" LED trim, polymer "dead-front", white shallow baffle & flange – shallow and standard housings  
(For use with 600 Series LED light modules only)

692SC=6" LED trim, specular reflector & white flange

692H=6" LED trim, haze reflector & white flange

692W=6" LED trim, white reflector & flange

693WB=6" LED trim, white micro-step baffle & flange

693BB=6" LED trim, black micro-step baffle & white flange

693SNB=6" LED trim, satin nickel micro-step baffle & flange

693TBZB=6" LED trim, tuscan bronze micro-step baffle & flange

694WB=6" LED directional trim, white eyeball, baffle & flange – shallow and standard housings

694SNB=6" LED directional trim, satin nickel eyeball, baffle & flange – shallow and standard housings

694TBZB=6" LED directional trim, tuscan bronze eyeball, baffle & flange – shallow and standard housings

695WW=6" LED trim, wall wash - specular reflector, repositionable specular kick reflector, white flange

696WB=6" LED trim, white shallow baffle & flange – for use with shallow and standard housings

### Accessories

ML56CLIP=Friction clip mounting kit - for retrofitting non-torsion spring housings, 6" clips\*

WW595SC=5" Wall wash insert - kick reflector for 595WW (1-included with trim) double or corner wall wash\*\*

WW695SC=6" Wall wash insert - kick reflector for 695WW (1-included with trim) double or corner wall wash\*\*

TRM590WH=5" LED oversize trim ring for use with 59" series trims, white 6.3" I.D., 7.5" O.D. Ring slips over LED trim. Inset design allows 5" trim to fit into oversize ring for an even trim surface

TRM690WH=6" LED oversize trim ring for use with 69" series trims, white 6.9" I.D., 9.5" O.D. Ring slips over LED trim. Inset design allows 6" trim to fit into oversize ring for an even trim surface

\*ML56CLIP is compatible with 6" baffle and reflector trims only (691, 692, 693, 695, 696 series). For eyeball trim (694 series) use ML7RAB retrofit adapter band.

\*\*Wall wash trims 595WW and 695WW feature an exclusive repositionable kick reflector for fine-tuning adjustment of the wall wash effect. The WW595SC and WW695SC are repositionable kick reflectors sold separately for addition to the wall wash trim when a double or corner wall wash is needed, or for replacement of original kick reflector included with the trim.

## Reflectors

Create wide light patterns and maximize the efficiency of the light source.



## Eyeballs

Provide precise, variable directional lighting. Useful for directing to accent wall hangings, mantels, and task areas



## Baffles

Trap and shape light to minimize aperture glare, reduce ceiling brightness, and narrow the focus of the downlighting beam.



## Wall Washer

Provide same vertical surface illumination. The ML56 repositionable kick reflector allows the user to position within the 360 degree trim aperture.

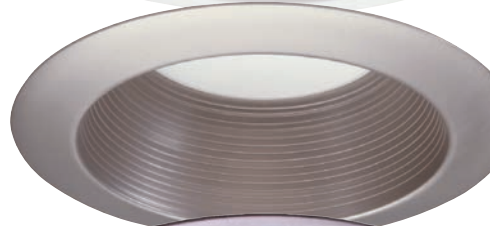


## Trim Ring Finishes

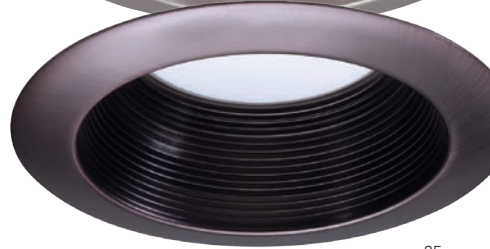
white



satin nickel



tuscan bronze



## 5" Trims

### 591

5" "dead front" shallow baffle



#### 591WB

white "dead front" shallow baffle  
(for 600 Series module only)

### 592

5" reflector



#### 592W

white



#### 592SC

specular clear



#### 592H

haze

### 595

5" wall wash



#### 595WW

specular reflector

### 596

5" shallow baffle



#### 596WB

white shallow baffle and trim

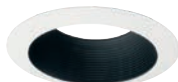
### 593

5" baffle



#### 593WB

white baffle and trim



#### 593BB

black baffle, white trim



#### 593SN

satin nickel baffle and trim



#### 593TBZ

tuscan bronze baffle and trim

### 594

5" eyeball



#### 594WB

white



#### 594SN

satin nickel



#### 594TBZ

tuscan bronze

### Accessory

5" oversize trim ring



TRM590WH  
white



## 6" Trims

**691**

6" "dead front" shallow baffle



**691WB**

white "dead front" shallow baffle  
(for 600 Series module only)

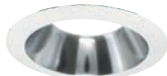
**692**

6" reflector



**692W**

white



**692SC**

specular clear



**692H**

haze

**695**

6" wall wash



**695WW**

specular reflector

**696**

6" shallow baffle



**696WB**

white shallow baffle and trim

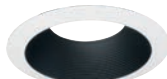
**693**

6" baffle



**693WB**

white baffle and trim



**693BB**

black baffle, white trim



**693SN**

satin nickel baffle and trim



**693TBZ**

tuscan bronze baffle and trim

**694**

6" eyeball



**694WB**

white



**694SN**

satin nickel



**694TBZ**

tuscan bronze

### Accessory

6" oversize trim ring



**TRM690WH**

white

# Housings

## ML56 Housing Compatibility

### Halo LED

6-inch: H750ICAT, H750RICAT, H750T, H750TCP, H2750ICAT, H2750RICAT, E750ICAT, E750RICAT

5-inch: H550ICAT, H550RICAT, E550ICAT, E550RICAT

### Halo LED retrofit

6-inch: ML7E26RFK, ML7BXXFK

### Halo Standard Housings

6-inch: H7ICAT, H7RICAT, H7ICT, H7RICT, H7ICATNB, H7ICTNB, H7T, H7RT, H7TNB, H7TCP, H7UICAT, E7ICAT, E7RICAT, E7ICATNB, E7TAT, E7RTAT, E7TATNB

5-inch: H5ICAT, H5RICAT, H5ICATNB, H5T, H5TNB, H5RT, E5ICAT, E5RICAT, E5ICATNB, E5TAT, E5TATNB, E5RTAT

### Halo Shallow Housings

6-inch: H27ICAT, H27RICAT, H27T, H27RT, E27ICAT, E27RICAT, E27TAT, E27RTAT

5-inch: H25ICAT, H25RICAT, H25ICATNB

### Halo 0-10V Housings

6-inch: H750ICATD010, H750RICATD010

5-inch: H550ICATD010, H550RICATD010



## Halo 5" LED housings



H550ICAT



H550RICAT

## Halo 6" LED housings



H750ICAT



H750RICAT



H2750ICAT



H2750RICAT

## Housings

### **Halo LED 6-inch**

H750ICAT= 6" LED, Insulated Ceiling, Air-Tite, New Construction Housing  
 H750RICAT= 6" LED, Insulated Ceiling, Air-Tite, Remodel Housing  
 H750T= 6" LED, Non-IC, Air-Tite, New Construction Housing  
 H750TCP= 6" LED, Non-IC, New Construction/Remodel Chicago Plenum Housing  
 H750ICATD010= 6" LED, IC rated, air-tite, new construction housing, 0-10V compatibility  
 H750RICATD010= 6" LED, IC rated, air-tite, remodel housing, 0-10V compatibility  
 H2750ICAT= 6" LED, Shallow, Insulated Ceiling, Air-Tite, New Construction (use with 691X, 694X, 696X trims only)  
 H2750RICAT= 6" LED, Shallow, Insulated Ceiling, Air-Tite, Remodel (use with 691X, 694X, 696X trims only)  
 E750ICAT= 6" LED, Insulated Ceiling, Air-Tite, New Construction Housing  
 E750RICAT= 6" LED, Insulated Ceiling, Air-Tite, Remodel Housing

### **Halo LED 5-inch**

H550ICAT= 5" LED, Insulated Ceiling, Air-Tite, New Construction Housing  
 H550RICAT= 5" LED, Insulated Ceiling, Air-Tite, Remodel Housing  
 H550ICATD010= 5" LED, IC rated, air-tite, new construction housing, 0-10V compatibility  
 H550RICATD010= 5" LED, IC rated, air-tite, remodel housing, 0-10V compatibility  
 E550ICAT= 5" LED, Insulated Ceiling, Air-Tite, New Construction Housing  
 E550RICAT= 5" LED, Insulated Ceiling, Air-Tite, Remodel Housing

### **Halo LED retrofit**

ML7E26RFK= 6" Retrofit Enclosure, Non-IC, E26 Screw base Interface  
 ML7BXFK= 6" Retrofit Enclosure, Non-IC, BX Whip

### **Halo Standard Housings 6-inch**

H7ICAT= 6" Insulated Ceiling, Air-Tite New Construction Housing  
 H7RICAT= 6" Insulated Ceiling, Air-Tite Remodel Housing  
 H7ICT= 6" Insulated Ceiling, New Construction Housing  
 H7RICT= 6" Insulated Ceiling, Remodel Housing  
 H7ICATNB= 6" Insulated Ceiling, Air-Tite New Construction Housing, No Socket Bracket  
 H7ICTNB= 6" Insulated Ceiling, New Construction Housing, No Socket Bracket  
 H7T= 6" Non-IC, New Construction Housing  
 H7RT= 6" Non-IC, Remodel Housing  
 H7TNB= 6" Non-IC, New Construction Housing, No Socket Bracket  
 H7TCP= 6" Non-IC, Chicago Plenum, New Construction/Remodel Housing  
 H7UICAT= 6" Insulated Ceiling, Universal, Air-Tite, New Construction Housing  
 E7ICAT= 6" Insulated Ceiling, Air-Tite New Construction Housing  
 E7RICAT= 6" Insulated Ceiling, Air-Tite Remodel Housing  
 E7ICATNB= 6" Insulated Ceiling, Air-Tite New Construction Housing, No Socket Bracket  
 E7TAT= 6" Non-IC, New Construction Housing  
 E7RTAT= 6" Non-IC, Remodel Housing  
 E7TATNB= 6" Non-IC, New Construction Housing, No Socket Bracket

### **Halo Standard Housings 5-inch**

H5ICAT= 5" Insulated Ceiling, Air-Tite New Construction Housing  
 H5RICAT= 5" Insulated Ceiling, Air-Tite Remodel Housing  
 H5ICATNB= 5" Insulated Ceiling, Air-Tite New Construction Housing, No Socket Bracket  
 H5T= 5" Non-IC, New Construction Housing  
 H5RT= 5" Non-IC, Remodel Housing

### **Halo Standard Housings 5-inch (continued)**

H5TNB= 5" Non-IC, New Construction Housing, No Socket Bracket  
 E5ICAT= 5" Insulated Ceiling, Air-Tite New Construction Housing  
 E5RICAT= 5" Insulated Ceiling, Air-Tite Remodel Housing  
 E5ICATNB= 5" Insulated Ceiling, Air-Tite New Construction Housing, No Socket Bracket  
 E5TAT= 5" Non-IC, New Construction Housing  
 E5RTAT= 5" Non-IC, Remodel Housing  
 E5TATNB= 5" Non-IC, New Construction Housing, No Socket Bracket

### **Halo Shallow Housings 6-inch\***

H27ICAT= 6" Shallow, Insulated Ceiling, Air-Tite New Construction  
 H27RICAT= 6" Shallow, Insulated Ceiling, Air-Tite Remodel Housing  
 H27T= 6" Shallow, Non-IC, New Construction Housing  
 H27RT= 6" Shallow, Non-IC, Remodel Housing  
 E27ICAT= 6" Shallow, Insulated Ceiling, Air-Tite New Construction  
 E27RICAT= 6" Shallow, Insulated Ceiling, Air-Tite Remodel Housing  
 E27TAT= 6" Shallow, Non-IC, New Construction Housing  
 E27RTAT= 6" Shallow, Non-IC, Remodel Housing

### **Halo Shallow Housings 5-inch\*\***

H25ICAT= 5" Shallow, Insulated Ceiling, Air-Tite New Construction  
 H25RICAT= 5" Shallow, Insulated Ceiling, Air-Tite Remodel  
 H25ICATNB= 5" Shallow, Insulated Ceiling, Air-Tite New Construction, No Socket Bracket

\*use with 691X, 694X, 696X trims only

\*\*use with 591X, 594X, 596X trims only

## Competitor Housing Compatibility

The ML56 LED light module - trim combination is cULus Listed or UL Classified for use with any 5" or 6" diameter recessed housing constructed of steel or aluminum with an internal volume that exceeds 115 in<sup>3</sup> in addition to those noted.

The ML56 system is UL Classified for retrofit in select 5" and 6" incandescent housings by others.

5" Housings	600	900	1200
<b>Juno Standard and Shallow Housings</b> (use with 591X, 594X, 596X trims only) IC20, IC25S, IC25W, TC20	●	●	

6" Housings	600	900	1200
<b>Juno Standard Housings</b> IC22, IC22R, IC22W, IC22S, IC23, IC23W, TC2, TC2R, IC2	●	●	●
<b>Juno Shallow Housings</b> (use with 691X, 694X, 696X trims only) C21, IC21R	●	●	
<b>Capri Standard Housings</b> CR1, PR1, QL1	●	●	●
<b>Capri Shallow Housings</b> (use with 691X, 694X, 696X trims only) R9ASIC/PS9RM	●	●	
<b>Elco</b> HL7ICA (EL7ICA)	●	●	●
<b>Lithonia Lighting Standard Housings</b> LC6, L7X	●	●	●

6" Housings	600	900	1200
<b>Lithonia Lighting Shallow Housing</b> (use with 691X, 694X, 696X trims only) L7XP	●	●	
<b>Thomas</b> PS1	●	●	●
<b>Commercial Electric</b> C7ICA, H3	●	●	●
<b>Progress Standard Housing</b> P87-AT†	●	●	●
<b>Progress Shallow Housing</b> (use with 691X, 694X, 696X trims only) P86TG†	●	●	
<b>Lightolier</b> 1104ICS†, 1104ICR†	●	●	●



† For 600 series and 900 series replace torsion springs with friction clips. Friction clip kit sold separately: ML56CLIP.  
For 1200 Series install the Retrofit Adapter Band in housing. Order separately: ML7RAB.



# CHAMPS SPORTS

Richard Cadan Photography  
[www.richardcadan.com](http://www.richardcadan.com)

### Lighting Product Lines

Ametrix  
AtLite  
Corelite  
Ephesus  
Fail-Safe  
Halo  
Halo Commercial  
Invue  
io  
Iris  
Lumark  
Lumière  
McGraw-Edison  
Metalux  
MWS  
Neo-Ray  
Portfolio  
RSA  
Shaper  
Streetworks  
Sure-Lites

### Our Controls Product Lines

Fifth Light Technology  
Greengate  
iLight (International Only)  
iLumin  
Zero 88

### Connected Lighting Systems

Distributed Low-Voltage Power  
HALO Home  
iLumin Plus  
Enlighted  
WaveLinx  
Trellix



### Cooper Lighting Solutions

1121 Highway 74 South  
Peachtree City, GA 30269  
P: 770-486-4800  
[www.cooperlighting.com](http://www.cooperlighting.com)

### Canada Sales

5925 McLaughlin Road  
Mississauga, Ontario L5R 1B8  
P: 905-501-3000  
F: 905-501-3172

© 2020 Cooper Lighting Solutions  
All Rights Reserved  
Printed in USA  
Publication No. BR518101EN  
October 2020

Cooper Lighting Solutions is a registered trademark.

All other trademarks are property of their respective owners.

Product availability, specifications, and compliances are subject to change without notice.