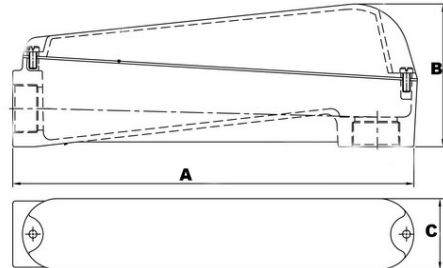




Morris CAT#: 14300-14306
Aluminum Mogul Conduit Bodies
with Cover & Gasket



Features:

- Larger body size facilitates pulling of large and heavy conductors
- Specially designed raised cast covers provide additional wiring area
- Moguls are used for pulling straight, 45° or 90° angle turns and/or making taps and splices
- Exclusive built-in rollers facilitate cable pulling
- Smooth, rounded integral bushing in each hub protects conductor insulation
- Accurately tapped, tapered threads for tight, rigid joints and ground continuity
- Covers have captive stainless steel screws to speed installation, prevent 'freezing' of screws
- Includes cellulose/rubber Flex Sealing Gasket
- Length Requirement: distance between centerline of each hub bushing (conduit stop) exceeds six times the trade diameter of the conduit

WITH COVER & GASKET

DIMENSIONS = INCHES

CAT. NO.	TRADE SIZE	DIMENSIONS			WIRESIZE	BOX QTY
		A	B	C		
I4300	1-1/4"	9.65	3.54	2.50	3 #1/0 AWG	2
I4301	1-1/2"	14.53	5.41	3.13	3 #3/0 AWG	1
I4302	2"	14.53	5.41	3.13	3 #300 MCM	1
I4303	2-1/2"	22.01	7.54	4.53	3 #400 MCM	1
I4304	3"	22.01	7.54	4.53	3 #700 MCM	1
I4305	3-1/2"	28.84	8.94	5.51	3 #900 MCM	1
I4306	4"	28.84	8.94	5.51	3 #1000 MCM	1