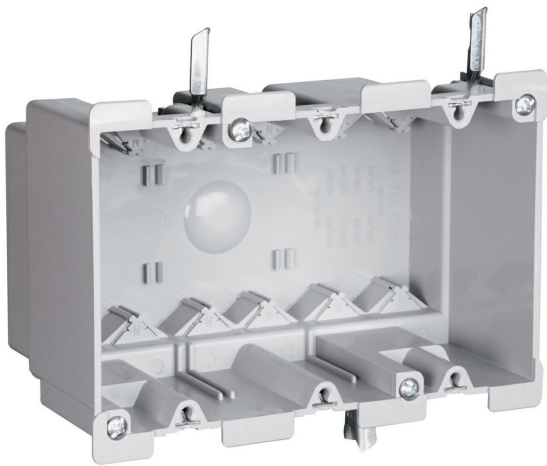




Legrand Old Work Switch and Outlet Box with Quick/Click

Part No. S352W



Triple Gang, Old Work Switch and Outlet Box with Swing-Bracket for mounting. Adjusts from 1 1/4" down to 1/8". Six Auto/Clamps for Each End. 10 pack.

Features & Benefits

Quick/Click feature secures devices quickly and easily.

Does not strip when over-torqued.

6: Auto/Clamps on each end eliminate the need for separate cable clamps.

Metal swing bracket for quick mounting in existing walls.

Big 52 cubic inch capacity.

Divider plate (LVDIV1, sold separately) used when installing line and low-voltage devices or multiple 277 volt devices in same box.

Easy installation, rectangular cutout.

Swing bracket adjusts from 1 1/4 inch to 1/8 inch.

Durable, impact-resistant thermoplastic box.

Specifications

General Info

Color	Gray	UPC Number	785007179149
-------	------	------------	--------------

Country Of Origin	United States	Product Line	Pass & Seymour
-------------------	---------------	--------------	----------------

Construction	Thermoplastic	Standard	UL Listed
--------------	---------------	----------	-----------

Dimensions

Cubic Capacity	52 cu in
----------------	----------

Additional Information

Product Environmental Profile	Yes
-------------------------------	-----

Technical Information

Cable Entry	No in	Number of Outlets	2
-------------	-------	-------------------	---