

SANUS®

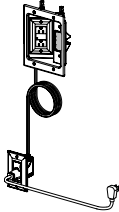
A brand of Legrand

Flat Panel TV Power and Cable Management

Model: **SA-IWP1**

Installation Instructions
Manual de instrucciones

6901-602711



Tools Needed | Herramientas Necesarias



Tape Measure
Cinta métrica



Level
Nivel



Pencil
Lápiz



Stud Finder
Localizador de montantes



Drywall Saw
Sierra para yeso



Phillips Screwdriver
Destornillador



Slotted Screwdriver
Ranurado Destornillador

IMPORTANT SAFETY INSTRUCTIONS

PLEASE READ ENTIRE MANUAL PRIOR TO USE

- SAVE THESE INSTRUCTIONS

Legrand electrical products conform to and should be properly grounded in compliance with requirements of the current National Electrical Code or codes administered by local authorities. All electrical products may present a possible electric shock or fire hazard if improperly installed or used. Legrand electrical products may bear the mark of a Nationally Recognized Testing Laboratory and should be installed in conformance with current local and/or the National Electrical Code.

CAUTION: Avoid potential personal injuries and property damage!

- **RISK OF FIRE AND SHOCK** - Only intended for use on 15 amp branch circuits.
- **RISK OF FIRE** - DO NOT install power supply cord within the wall cavity.
- **RISK OF FIRE AND SHOCK** - DO NOT connect this box with any other circuits or outlets.
- Do not use this product for any purpose not explicitly specified by manufacturer.
- Manufacturer is not responsible for damage or injury caused by incorrect assembly or use.
- If you do not understand these instructions or have doubts about the safety of the installation, assembly or use of this product, contact customer service.

INSTRUCCIONES DE SEGURIDAD IMPORTANTES

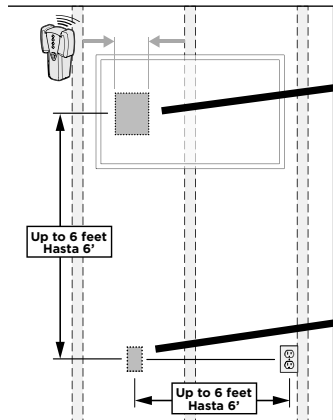
LEA EL MANUAL ANTES DE UTILIZAR ESTE PRODUCTO - CONSERVÉLAS

Se ajustan a los productos eléctricos de Legrand y correctamente deben basarse en cumplimiento de los requisitos del código eléctrico nacional actual o códigos administrados por las autoridades locales. Todos los productos eléctricos pueden presentar un posible choque o incendio si mal instalado o utilizado. Productos eléctricos Legrand podrán llevar la marca de un nacionalmente reconocido laboratorio de prueba y deben instalarse de conformidad con el actual local y/o el código eléctrico nacional.

PRECAUCIÓN: Evite posibles lesiones personales y daños materiales.

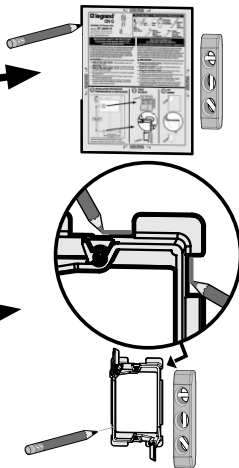
- **Riesgo de incendio y choque** - Solamente destinados a uso en circuitos de 15 amperios
- **Riesgo de incendio** - No instale el cable de alimentación dentro de la cavidad de la pared
- **Riesgo de incendio y choque** - No conecte este cuadro a cualquier otros circuitos o los tomacorrientes
- No utilice este producto para ningún otro propósito que no sea el explícitamente especificado por el fabricante
- El fabricante no se responsabiliza de ningún daño o lesión resultante del montaje incorrecto o el uso indebido
- Si no entiende las instrucciones o si tiene dudas acerca de la seguridad de la instalación, el montaje o el uso del producto, póngase en contacto con el Servicio de Atención al Cliente.

1 INSTALLATION PREPARATION PREPARACIÓN DE LA INSTALACIÓN

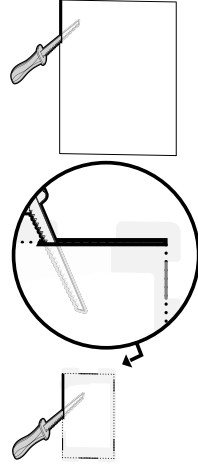


Find your desired locations (between studs).
Busque los lugares deseados (entre montantes).

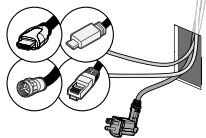
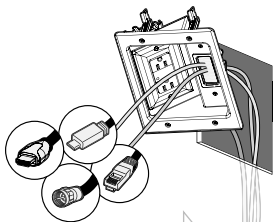
2 TRACE DELINEAR



3 CUT CORTAR



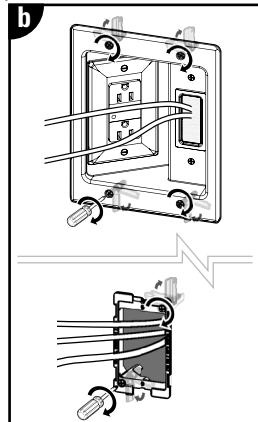
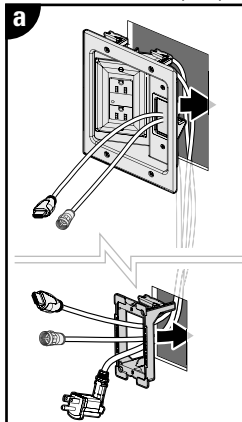
**4 RUN POWER CORD and A/V CABLES
PASAR LOS CABLES**



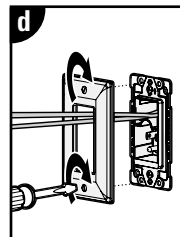
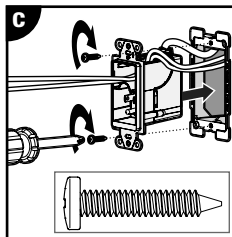
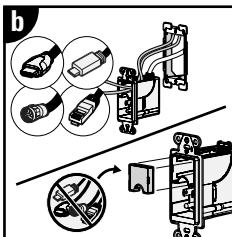
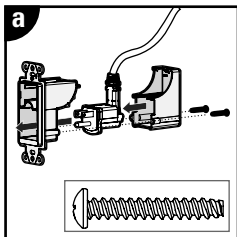
**5 SECURE
FIJAR**

Insert into the wall and secure the lock tabs by turning the screws.

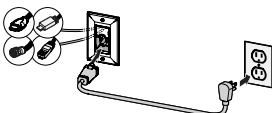
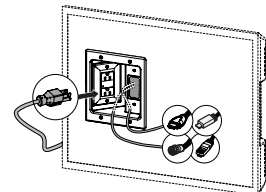
Inserte la placa en la pared y atornille las pestañas de bloqueo para fijarlas.



**6 ASSEMBLE
ENSAMBLAR**



**7 CONNECT CABLES
CONECTAR CABLES**



SANUS®

A brand of **legrand**

Thank you for choosing SANUS!

Please take a moment to let us know how we did:



1-800-359-5520



info@sanus.com

Legrand AV Inc. and its affiliated corporations and subsidiaries (collectively, "Legrand"), intend to make this manual accurate and complete. However, Legrand makes no claim that the information contained herein covers all details, conditions, or variations. Nor does it provide for every possible contingency in connection with the installation or use of this product. The information contained in this document is subject to change without notice or obligation of any kind. Legrand makes no representation of warranty, expressed or implied, regarding the information contained herein. Legrand assumes no responsibility for accuracy, completeness or sufficiency of the information contained in this document.

©2021 Legrand AV Inc. All Rights Reserved. Made in China.

©2021 Legrand AV Inc. Todos los derechos reservados. Hecho en China.

6901-602711

↑ CUTTING TEMPLATE PLANTILLA DE CORTE ↓

↑ CUTTING TEMPLATE PLANTILLA DE CORTE ↓