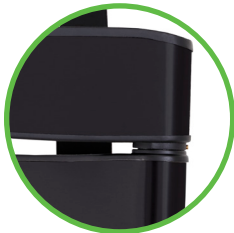


ADVANCED FULL-MOTION PREMIUM WALL MOUNT FOR TVS 46" - 95"

High-end performance meets high-end design

The Advanced Full-Motion Premium TV Mount is a next-generation mount that incorporates the TV into a home in an entirely modern way. Featuring a stylish brushed metal finish and slim profile, the Advanced Full-Motion Mount complements the sleek look of today's TVs. Beneath the mount's exterior is a precision-engineered, ultra-strong solid steel frame – ensuring the TV stays securely in place.

Expertly engineered with FluidMotion™ design, the Advanced Full-Motion Mounts provide unparalleled smoothness – allowing for effortless extension and swivel. The mount's Steady Set™ functionality holds the TV in place – eliminating drift and unwanted TV movement. The simple and intuitive design guarantees a quick and hassle-free installation.



Stylish brushed metal exterior seamlessly blends with TV and décor



In-arm cable management creates a clean look



Steady Set™ holds TV in exact position – preventing drift and unwanted TV movement



FluidMotion™ design provides effortless TV movement



Slim full-motion mount sits just 2.46" from the wall in home position accentuating the sleek look of ultra-thin TVs



Precision-engineered, ultra-strong, solid steel frame provides maximum support



Virtual Axis™ provides fingertip tilt

SPECIFICATIONS

PRODUCT DIMENSIONS (W X D X H)

36.73" x 2.46" x 22.03"
93.29cm x 6.25cm x 55.96cm

TV SIZE / WEIGHT CAPACITY

175 lbs. / 79.38kg

MINIMUM DEPTH FROM WALL

2.46" / 6.25cm

EXTENSION

30" / 76.20cm

MOUNTING PATTERN (VESA)

Minimum 200x200
Maximum 600x400

PACKAGE DIMENSIONS (W X D X H)

39.96" x 23.43" x 4.80"
101.50cm x 59.50 cm x 12.20 cm

PACKAGE WEIGHT

44.1 lbs / 20kg

MASTER PACK QTY

1

MASTER PACK DIMENSIONS (W X D X H)

40.75" x 24.02" x 5.71"
103.50cm x 61cm x 14.50cm

MASTER PACK WEIGHT

47.4 lbs / 21.50kg

MSRP

\$409.99

LIST PRICE

\$449.99

AVAILABLE

August 2019

FINISH

Brushed Black Stainless

UPC

793795533937



ADDITIONAL FEATURES:

- Up to 18° of tilt and 55° of swivel left to right for ultimate viewing flexibility
- Lateral shift for perfect TV positioning
- Decorative covers conceal wall plate for a clean look
- Easily level TV after installation
- Safety-tested, UL-listed and features a 10-year limited warranty
- All hardware and drilling template included

