



Color: Black/white

Weight: 1.1 lbs

**Project:**

**Type:**

**Prepared By:**

**Date:**

### Driver Info

Type	Constant Current
120V	N/A
208V	N/A
240V	N/A
277V	N/A
Input Watts	13W

### LED Info

Watts	13W
Color Temp	2700K/3000K/3500K/4000K/5000K
Color Accuracy	90 CRI
L70 Lifespan	50,000 Hours
Lumens	800 lm
Efficacy	65.38461538

## Technical Specifications

### Performance

#### Description:

This 6-inch canless wafer downlight has an ultra low-profile design and 5 field adjustable color temperatures making them a flexible solution for both new construction and retrofit applications. The remote driver box has quick connectors, knockouts, and plenty of space for daisy chain wiring or adding an emergency backup unit.

#### Product Type:

Recessed Downlights

#### Input Wattage:

13W

#### Lumens (Nominal):

800lm

#### L70 Lifespan:

50,000-Hour LED lifespan based on IES LM-70 results

### Dimming:

Yes, See Dimmer Compatibility List

### Compliance

#### UL Listed:

Suitable for wet locations

### Electrical

#### THD:

≤20%

#### Power Factor:

0.9

#### Operating Frequency:

60 Hz

### Construction

#### Material:

Plastic

#### Trim Style:

Baffle Trim

#### Shape:

Square

#### Mounting:

Recessed ceiling

## Technical Specifications (continued)

### Construction

#### Operating Temperature Range:

-20°C - 40°C (-4°F - 104°F)

### Other

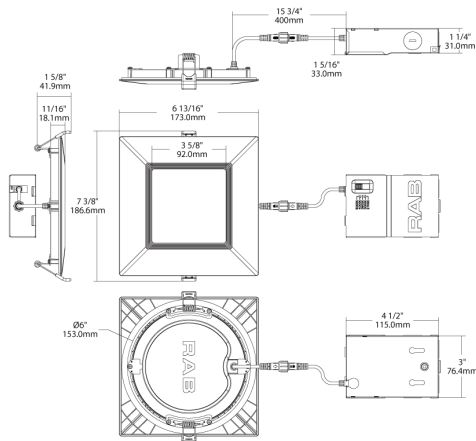
#### Warranty:

RAB warrants that our LED products will be free from defects in materials and workmanship for a period of five (5) years from the date of delivery to the end user, including coverage of light output, color stability, driver performance and fixture finish. RAB's warranty is subject to all terms and conditions found at [rablighting.com/warranty](http://rablighting.com/warranty).

#### Buy American Act Compliance:

RAB values USA manufacturing! Upon request, RAB may be able to manufacture this product to be compliant with the Buy American Act (BAA). Please contact customer service to request a quote for the product to be made BAA compliant.

## Dimensions



## Features

- 5 color temperatures in 1 SKU (2700K, 3000K, 3500K, 4000K, 5000K)
- Super slim Edge-lit fixture for thin fixture depth
- No recessed housing or J-box required
- New construction or retrofit applications
- UL wet location rated
- Smooth diffused uniform light distribution
- Dimmable down to 5% on compatible dimmers
- Spring loaded retention clips
- Robust, die cast aluminum construction
- IC and airtight rated
- 5-Year, No-Compromise Warranty

## Ordering Matrix

Family	Size	Shape	Wattage	CRI/Color Temp	Voltage	Finish	Trim	Depth
WFRL	6	S	13	9FA	120	W	B	
	3 = 3"	R = Round	6 = 6W	9FA = 90 CRI, 5000K/4000K/3500K/2700K	120 = 120V	W = White	B = Baffle	Blank = Standard
	4 = 4"	S = Square	9 = 9W	9CCT = 90 CRI, 5000K/4000K/3500K/2700K	D = 120V/277V		S = Smooth	S = Shallow
	5 = 5"		10.5 = 10.5W					
	6 = 6"		12 = 12W					
	8 = 8"		13 = 13W					
			14 = 14W					
			23 = 23W					